



# CATALOG

ENTRANCE MATS AND TILES

LOGO MATS

ANTI-FATIGUE & SLIP-RESISTANT MATS

SPECIALTY MATS

# About M+A Matting

The M+A name represents two powerful brands – Mountville and Andersen – with nearly a century of combined experience developing and manufacturing mats designed to make environments safer, cleaner, and more comfortable.

## A Brief History

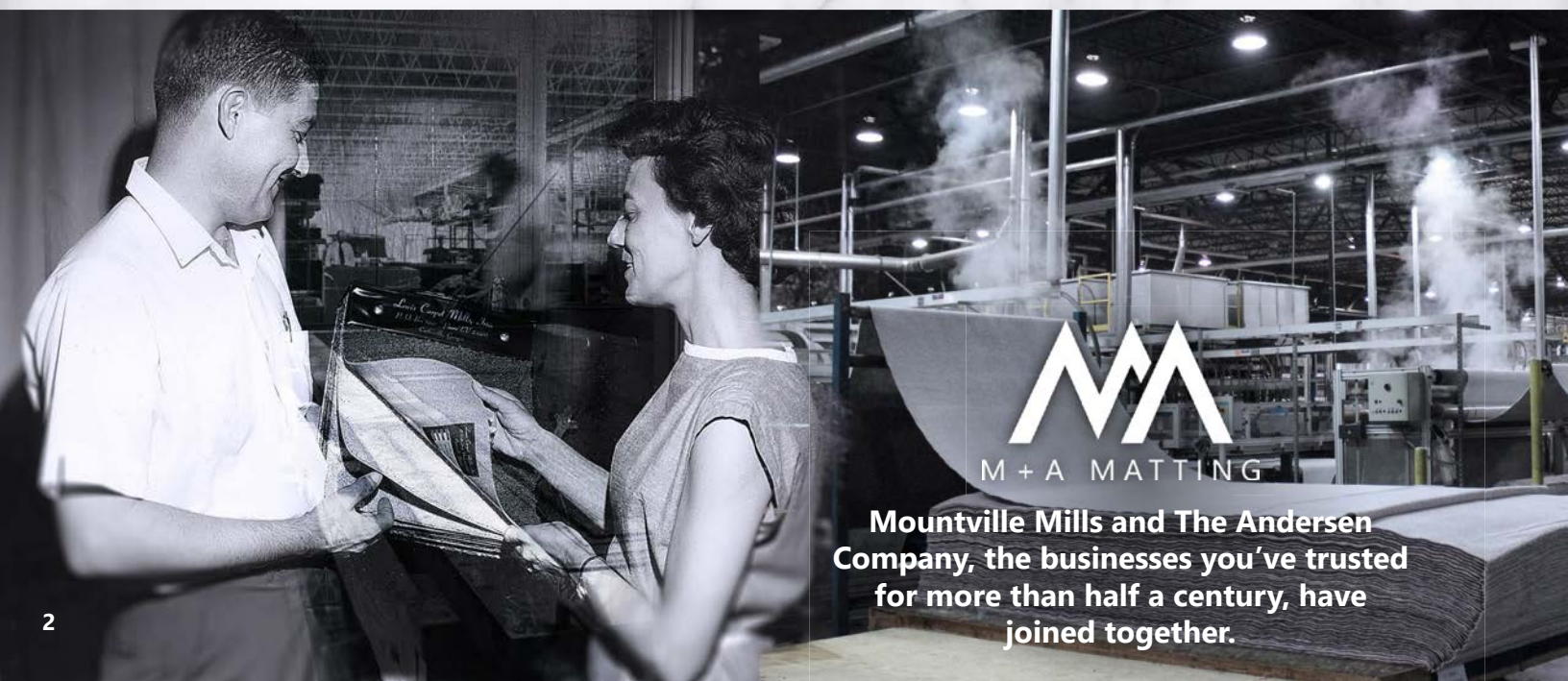
In 1963, the late Emmet Hart, with his wife Nancy by his side, established Mountville Mills. A little over a decade later, in 1974, the late Walter Andersen established The Andersen Company. Throughout the years, the companies drove innovations in their respective markets; Mountville in the textile rental market, and Andersen in the janitorial/sanitary supply markets. Driven by quality, innovation, and customer service, they paved the way for future generations of Harts and Andersens to expand the business. In 1999, these flagship brands joined forces to become the largest mat manufacturer in the world, and in 2018 we made the union official with a name change to M+A Matting.

For decades, we've been a symbol of quality and customer service. We're the driving force in the mat industry, developing the next generation of mats designed to provide superior safety, cleanliness, and comfort to workers and customers across the world. Whether you need entrance matting, logo matting, or anti-fatigue matting, M+A has you covered.

There are three principles that guide every action we take, every decision we make, and every mat we produce:

- Do the right thing.
- Do what is best for the customer.
- Drive improvements and innovation.

It is these core values that drive us to provide our customers with high-performance, high-quality matting and unparalleled customer satisfaction.



# Satisfaction Guaranteed

M+A mats are where design and function come together, where quality isn't compromised to meet a price point, and where solutions to your maintenance and décor problems come first. We promise our customers an unconditional, 100% satisfaction guarantee for the life of the product.

At M+A, we are committed to reducing our environmental impact. We are continually improving our environmental performance as an integral and fundamental part of our business strategy and operating methods. We have reduced waste going to landfills by 80% and recycle most paper, metal, cardboard, plastic, carpet, and rubber waste we generate. Our commitment is also evident in our development of dozens of mat styles that contain recycled raw materials.

For over five decades, M+A Matting has been America's leader in innovative floor protection systems, industrial safety, anti-fatigue products, and high performance entrance matting. If you are looking for better ways to minimize maintenance, prolong floor surface life, reduce cleaning costs, improve safety, or increase worker comfort, ask for M+A Matting.



## Our Environmental Commitment

M+A Matting is dedicated to environmental stewardship and strives to create a culture of conservation as a manufacturer and global supplier. We have funded and will continue to fund the research and development (R&D) of matting designed to keep facilities safe, clean, and comfortable.

As a leading manufacturer of matting, M+A has established R&D priorities intended to create sustainable products made from recycled materials whenever possible, and continually evaluates operational procedures looking for opportunities to implement practices that conserve resources and minimize waste.

### Conservation Through Innovation

- Our SBR rubber compound contains 20% recycled rubber from car tires.
- Several of our mats are made with PET (polyethylene terephthalate), a synthetic fiber made from post-consumer recycled plastic bottles.
  - » Our 23-ounce PET yarn contains 100% recycled content
  - » Our 24-ounce WaterHog® PET fiber contains 97-100% recycled content as does our 30-ounce WaterHog Max PET fiber
  - » Our 44-ounce Berber Impressions carpet contains 85% recycled content
  - » In 2022, M+A transformed more than 69 million plastic bottles that might have otherwise ended up in a landfill or ocean into ColorStar, WaterHog, WaterHog Max, and Berber Impressions mats
- Over the past few years, we transitioned from separating layers of rubber backing with plastic (to prevent adhesion) to using a unique dip process that eliminated the need for a plastic barrier between each sheet of rubber. As rubber is calendared, it's dipped in a solution that coats it with an inert powder and prevents the layers of rubber from sticking to one another when stacked/stored. This dip process has allowed us to eliminate the use of more than 500,000 pounds of plastic per year!

### Reuse • Reduce • Recycle

- We recycle nearly 1 million pounds of yarn and other synthetic materials, and approximately 200,000 pounds of paper and cardboard each year.
- Mountville Rubber, M+A Matting's sister company and rubber supplier, recycles approximately 1.6 million pounds of rubber annually.

# Glossary

Product	Product #	Page #	Product	Product #	Page #
Action Mat	80	86	Hog Heaven Knee Guard	433	66
Bar Impressions	5190	56	Hog Heaven Workstation	4493, 4494	61
Berber Impressions HD	2383	48	Oil Magnet	2020	87
Berber Roll Goods	2281, 2282	34	REPP-Tile Carpet Tile	684	41
Berber Roll Goods Inlay	2283	49	Safety Scrape	545	88
Brush Hog	395	15	Steady Comfort	5220	76
Classic Brush	110	35	SuperScrape	555, 5555	16
Classic MicroLuxx	1201	38	SuperScrape Impressions	3559	52
Classic Plush	180	39	SuperScrape Plus	5558	17
Classic Solutions	120	36	Sure Cushion	425, 427, 428, 415	78
Classic Solutions Plus	130	37	CleanShield Roll Goods	4450	82
CleanShield Stride	410, 412	22	CleanShield Roll Goods - Accessories	4459, 4460	82-83
CleanShield Universal	4075	84	CleanShield Plush Roll Goods	4457	83
CleanShield Urinal	4065, 4465	85	Switchboard Matting	781, 782, 783, 784	91
ColorStar	100	40	Traction Tread	50	89
ColorStar Impressions	60	44	Traction Tread Grit	51	90
ColorStar Impressions HD	973	45	TuffComfort Impressions	5235	54
ColorStar Impressions HD Custom Shape	970	46	TuffComfort Max	5233, 5236	67
ColorStar Message Mats	-	81	TuffComfort Standing Desk	5230	68
Comfort Flow	420	74	WaterHog	200, 280	21
Comfort Premier	594	71	WaterHog CleanShield Stride	411	22
Comfort Scrape	430	75	WaterHog Diamond	208, 221	24
Comfort Station Max	370, 371	73	WaterHog Diamondcord	296	29
Cushion Complete	494, 496	70	WaterHog Drainable Border	250	23
Cushion Select	414	72	WaterHog Forklift	1253	92
Desk Chair Mat	2285	80	WaterHog Impressions HD	2381, 2380	47
DuraComfort	475, 476	69	WaterHog Inlay	234, 235	51
Floor Impressions	3425	55	WaterHog Masterpiece Select	265	30
Frontier	437	18	WaterHog Max Diamond	2295, 2297	25
Hog Heaven	421, 422, 423, 424	59	WaterHog Max Grand	2246, 22248, 2249	27
Hog Heaven Drainable Tiles	4411, 4412, 4413, 4414, 4415, 4416	62	WaterHog Max Herringbone	2240, 2241	26
Hog Heaven Electrically Conductive	4507, 4509, 4511, 4513	63	WaterHog Max Roll Goods	2272, 2271	33
Hog Heaven Fashion	441, 442	65	WaterHog Max Roll Goods Inlay	2268	50
Hog Heaven Impressions	3422	53	WaterHog Max Tiles	2215, 2217, 2218	32
Hog Heaven Marble	448, 449	64	WaterHog Modular Tiles	2210	31
Hog Heaven Tiles	4497, 4498, 4471, 4472,	60	WaterHog Plus	185	28
			Wet Step	789	77



# Table of Contents

About M+A Matting			2
Satisfaction Guaranteed & Environmental Commitment			3
Technology			4
Glossary			5
Table of Contents			6-7
Symbols			8-9
The Right Mat for Every Job			10-11
3-Mat Entry System			12-13
<b>Product Name</b>	<b>Product No.</b>	<b>Mat Type</b>	<b>Page Number</b>
Entrance Mats			14
Brush Hog	395	Scraper	15
SuperScrape	555, 5555	Scraper	16
SuperScrape Plus	5558	Scraper	17
Frontier	437	Slip-Resistant	18
<b>Wonderful World of WaterHog</b>			19-20
WaterHog	200, 280	Scraper/Wiper	21
WaterHog CleanShield Stride	410, 411, 412	Specialty	22
WaterHog Drainable Border	250	Scraper/Wiper	23
WaterHog Diamond	208, 221	Scraper/Wiper	24
WaterHog Max Diamond	2295, 2297	Scraper/Wiper	25
WaterHog Max Herringbone	2240, 2241	Scraper/Wiper	26
WaterHog Max Grand	2246, 22248, 2249	Scraper/Wiper	27
WaterHog Plus	185	Scraper/Wiper	28
WaterHog Diamondcord	296	Scraper/Wiper	29
WaterHog Masterpiece Select	265	Scraper/Wiper	30
WaterHog Modular Tiles	2210	Scraper/Wiper	31
WaterHog Max Tiles	2215, 2217, 2218	Scraper/Wiper	32
WaterHog Max Roll Goods	2271, 2272	Scraper/Wiper	33
Berber Roll Goods	2281, 2282	Carpeted (Wiper)	34
Classic Brush	110	Carpeted (Wiper)	35
Classic Solutions	120	Carpeted (Wiper)	36
Classic Solutions Plus	130	Carpeted (Wiper)	37
Classic MicroLuxx	1201	Carpeted (Wiper)	38
Classic Plush	180	Carpeted (Wiper)	39
ColorStar	100	Carpeted (Wiper)	40
REPP-Tile	684	Carpet Tile	41
<b>Logo</b>			42
Logo Mat Program Page			43
ColorStar Impressions	60	Carpeted (Wiper)	44
ColorStar Impressions HD	973	Carpeted (Wiper)	45
ColorStar HD Custom Shape	970	Carpeted (Wiper)	46
WaterHog Impressions HD	2381, 2380	Scraper/Wiper	47
Berber Impressions HD	2383	Carpeted (Wiper)	48

Berber Roll Goods Inlay	2283	Carpeted (Wiper)	49
WaterHog Max Roll Goods Inlay	2268	Scraper/Wiper	50
WaterHog Inlay	234, 235	Scraper/Wiper	51
SuperScrape Impressions	3559	Scraper	52
Hog Heaven Impressions	3422	Anti-Fatigue	53
TuffComfort Impressions	5232	Anti-Fatigue	54
Floor Impressions	3425	Promotional	55
Bar Impressions	5190	Promotional	56
<b>Anti-Fatigue Mats</b>			57
<b>Anti-Fatigue Facts</b>			58
Hog Heaven	421, 423, 422, 424	Anti-Fatigue	59
Hog Heaven Tiles	4471, 4472, 4497, 4498	Anti-Fatigue	60
Hog Heaven Workstation	4493, 4494	Anti-Fatigue	61
Hog Heaven Drainable Tiles	4411, 4412, 4413, 4414, 4415, 4416	Anti-Fatigue	62
Hog Heaven Electrically Conductive	4507, 4509, 4511, 4513	Anti-Fatigue	63
Hog Heaven Marble	448, 449	Anti-Fatigue	64
Hog Heaven Fashion	441, 442	Anti-Fatigue	65
Hog Heaven Knee Guard	433	Anti-Fatigue	66
TuffComfort Max	5233, 5236	Anti-Fatigue	67
TuffComfort Standing Desk	5230	Anti-Fatigue	68
DuraComfort	475, 476	Anti-Fatigue	69
Cushion Complete	494, 496	Anti-Fatigue	70
Comfort Premier	594	Anti-Fatigue	71
Cushion Select	414	Anti-Fatigue	72
Comfort Station Max	370, 371	Anti-Fatigue	73
Comfort Flow	420	Anti-Fatigue	74
Comfort Scrape	430	Anti-Fatigue	75
Steady Comfort	5220	Anti-Fatigue	76
Wet Step	789	Anti-Fatigue	77
Sure Cushion	415, 425, 427, 428	Anti-Fatigue	78
<b>Specialty</b>			79
Desk Chair Mat	2285	Carpeted (Wiper)	80
ColorStar Message Mats	-	Carpeted (Wiper)	81
CleanShield Roll Goods	4450	Slip-Resistant	82
CleanShield Plush Roll Goods	4457	Slip-Resistant	83
CleanShield Universal	4075	Specialty	84
CleanShield Urinal	4065	Specialty	85
Action Mat	80	Absorbent	86
Oil Magnet	2020	Absorbent	87
Safety Scrape	545	Slip-Resistant	88
Traction Tread	50	Slip-Resistant	89
Traction Tread Grit	51	Slip-Resistant	90
Switchboard	781, 782, 783, 784	Non-Conductive	91
WaterHog Forklift	1253, 1049	Specialty	92
Color Guide			93-100

# Symbols



## Scraper

Scraper mats are heavy-duty mats designed to stop mud and larger particles of dirt from being tracked inside buildings.



## Scraper/Wiper

Scraper/Wiper mats provide scraping action and wiping to further stop dirt and moisture from entering a facility. These mats are typically made of tough heavy-duty commercial fabrics. They retain dust in recessed grooves while absorbing moisture in the fabric surface.



## Carpeted (Wiper)

Wiper mats are designed to stop any remaining dust and moisture. These mats are made with a variety of carpeted surfaces and colors to compliment a wide range of interiors.



## Anti-Fatigue

Ergonomic mats and floor tiles reduce fatigue by up to 50%. Anti-fatigue mats help increase blood circulation and reduce pressure on the body's musculoskeletal system. They also reduce foot arch pronation, varicose veins, and pain commonly attributed to standing for long periods of time.



## Anti-Slip

Uniquely designed texturized surfaces prevent slip and fall accidents. Heavy-duty rubber keeps the mats in place and prevents movement on a variety of surfaces.



## Damp Areas

May be used in areas where moisture is present.



## Wet Areas

Recommended for use in wet areas. While other mats may be suitable for use in wet areas, mats with the wet icon are the best choice for wet areas. These mats are designed to provide traction even in very wet conditions.



## Anti-Microbial

Matting permanently treated with an anti-microbial agent that guards against degradation from micro-organisms and minimizes mats being a source of odors.

# Symbols



## **Chemical Resistant**

Many M+A Matting mats are manufactured with nitrile rubber which is resistant to most commonly used chemicals.



## **Oily Environment**

Nitrile rubber mats withstand degradation from oils and grease. These mats are suitable for use in environments with industrial oils, machine lubricants, greases, food grade oils, etc.



## **Safety**

Matting and tiles with highly visible, colored borders and beveled edges reduce trips and falls.



## **Welding Safe**

Matting that is suitable for use in locations of high temperatures and welding slag. The temperature resistant rubber can withstand temperatures up to 1742 degrees Fahrenheit from welding slag and hot metal shavings.



## **ESD**

Matting that dissipates static electricity from people to protect sensitive equipment and small static generated electric shocks.



## **Cart Traffic**

Matting and tiles designed to withstand heavy cart traffic.



## **Recycled Content**

Contains recycled content.

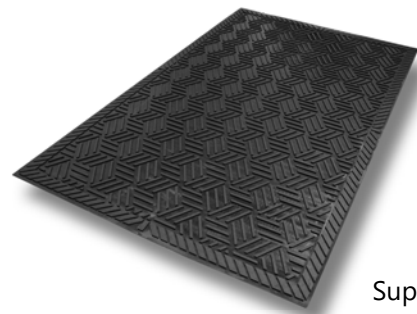


---

# LINE OF DEFENSE

## #1 Scraper Mats

Scraper mats are designed for placement outside to stop mud and large debris from entering your building. These mats provide aggressive scraping action to remove dirt and debris from shoes and trap it in recessed areas.



SuperScape Plus

## #2 WaterHog (Scraper/Wiper) Mats

Scraper/wiper mats are designed to provide scraping action and wiping to further stop dirt and moisture from entering a facility. These mats are typically made of tough fabrics. They channel and retain dirt in recessed grooves while absorbing moisture in the fabric surface. These mats are primarily used inside but may be used outside as well.



WaterHog

## #3 Carpeted (Wiper) Mats

As entrance mats, carpeted mats are designed to remove any remaining dirt and moisture from shoes. They also provide excellent dust control. The carpet is made in various materials and colors to suit a variety of needs and blend with virtually any décor. Carpeted mats are designed for indoor use. When used in conjunction with a scraper mat and WaterHog mat, they can help stop as much as 80% of dirt from entering a building.



Classic MicroLuxx

---

# SPECIALTY MATS

## Logo Mats

### Promote Your Brand

Logos, messages, and artwork add a professional look to any entrance or lobby, in addition to the cleanliness and safety benefits the mat itself provides. M+A can add your logo or custom artwork to mats of all types.

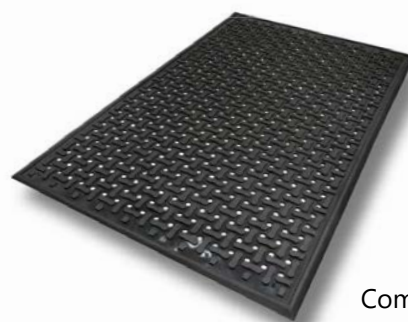


WaterHog  
Impressions HD

## Flow-Through Mats

### Wet Area Solutions

Flow-through mats are designed for wet environments. The surface offers extra traction while the holes allow liquid to pass through to help eliminate slipping hazards. Flow-through mats also provide excellent anti-fatigue benefits for workers who stand for long periods of time.

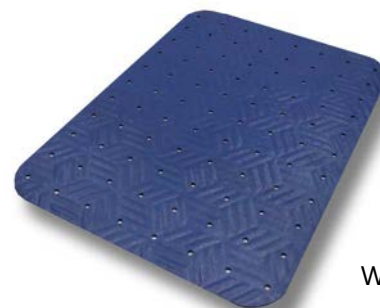


Comfort Flow

## Slip-Resistant Mats

### Protect Against Slips and Falls

With slip-and-fall accidents comprising the majority of worker's compensation claims and a large share of unintended injuries in general, it's more important than ever to ensure that surfaces are as slip resistant as possible. Slip-resistant mats are an ideal solution for providing traction in slippery areas.

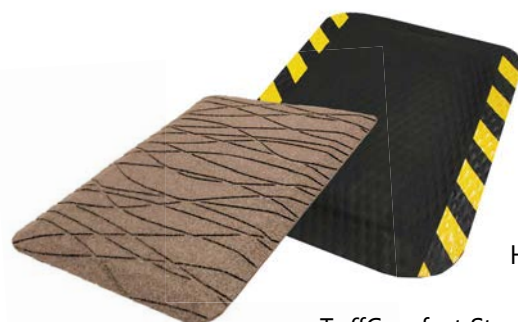


Wet Step

## Anti-Fatigue Mats

### Provide Comfort & Safety

Standing for long periods of time restricts blood flow to the lower extremities, causing soreness and fatigue. Anti-fatigue mats provide support to muscles in the lower legs and back and promote subtle movement in the leg and calf muscles which results in increased blood and oxygen flow. Anti-fatigue mats are available in a wide array of thicknesses and materials to suite a variety of workspaces and environments.



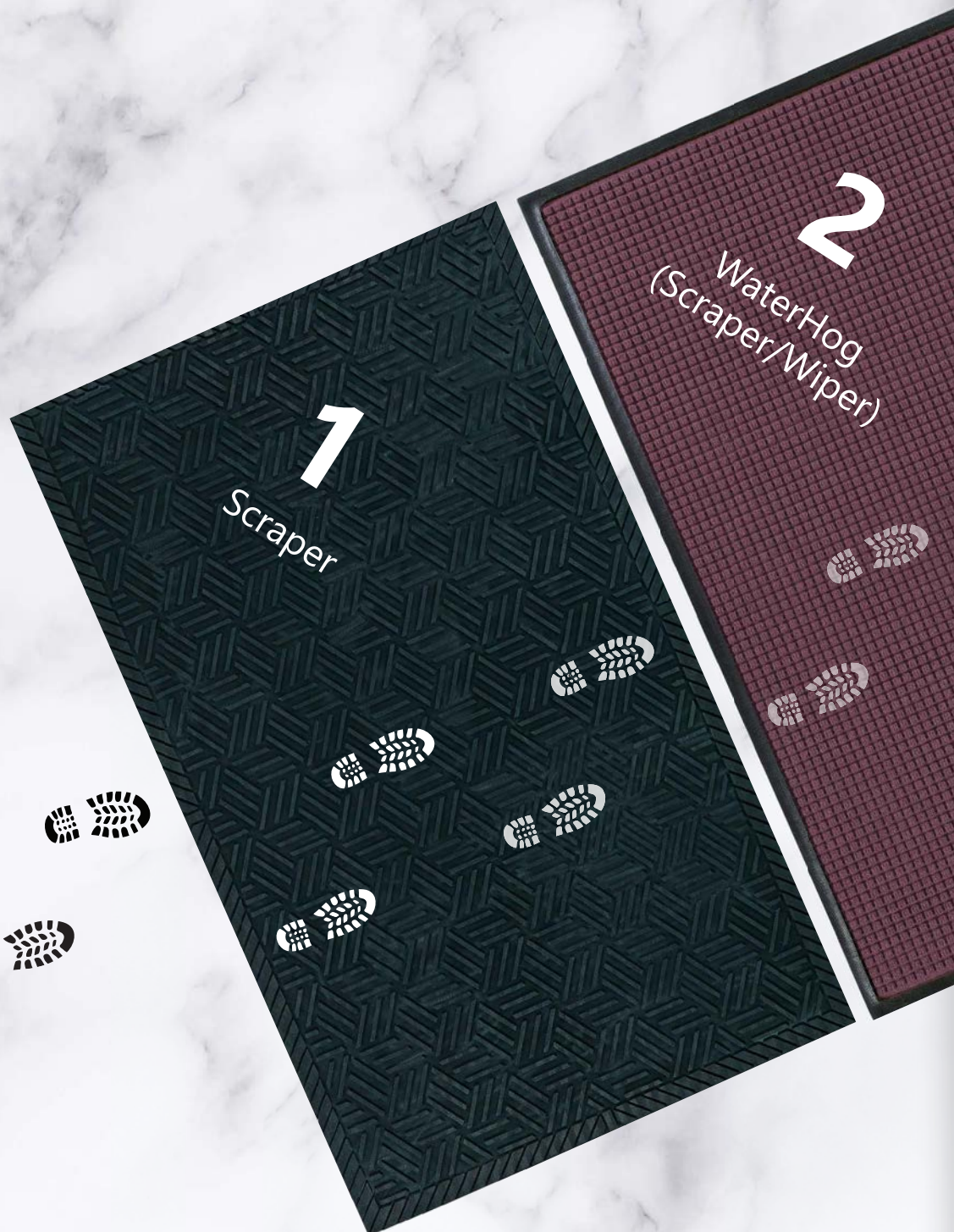
Hog Heaven

TuffComfort Standing Desk

# 3

## Mat Entry System

Stop dirt and moisture at your door







**80%** of dirt, dust, and moisture brought into a building can be contained within the first 9 to 15 feet with mats (CRI).

the 3-Mat Entry System help keep your building cleaner, safer, and more comfortable.



## ENTRANCE MATS

---

### Scraper

Brush Hog™  
SuperScrape™  
SuperScrape Plus®  
Frontier

### WaterHog

WaterHog®  
WaterHog® CleanShield® Stride  
WaterHog® Drainable Border  
WaterHog® Diamond  
WaterHog® Max Diamond  
WaterHog® Max Herringbone  
WaterHog® Max Grand  
WaterHog® Plus  
WaterHog® Diamondcord  
WaterHog® Masterpiece® Select  
WaterHog® Modular Tiles  
WaterHog® Max Tiles  
WaterHog® Max Roll Goods

### Carpeted

Berber Roll Goods  
Classic Brush™  
Classic Solutions™  
Classis Solutions Plus™  
Classic MicroLuxx™  
Classic Plush™  
ColorStar®  
REPP-Tile™



Burgundy



Charcoal



Navy

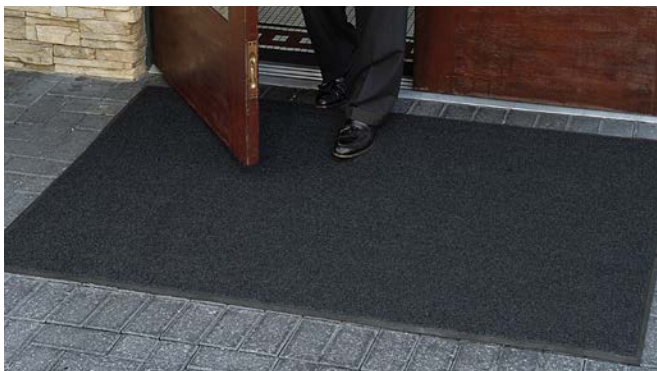


- **Clean** – The turf-pile construction aggressively scrapes dirt from shoes and filters moisture and dirt away from the mat surface; drainable borders
- **Fade Resistant** – Solution-dyed nylon will not fade in sunlight
- **Eco-Friendly** – SBR rubber backing contains 20% post-consumer recycled rubber from car tires
- **Safe** – Certified high-traction by the National Floor Safety Institute (NFSI)
- Comes standard with 78-mil smooth SBR backing, but is available with 78-mil universal cleated SBR backing

## SIZES

2' x 3'	3' x 16'	4' x 20'
3' x 4'	3' x 20'	6' x 8'
3' x 5'	4' x 6'	6' x 12'
3' x 6'	4' x 8'	6' x 16'
3' x 8'	4' x 10'	6' x 20'
3' x 10'	4' x 12'	
3' x 12'	4' x 16'	

Custom sizes available in widths of 3' (35"), 4' (45"), 6' (69") and whole foot lengths up to 60'. Please note, mat sizes are approximate as rubber shrinks and expands in conjunction with temperature and time. Tolerable manufacturing size variance is 3-5%.



Product No. 395





# SUPERSCAPE™

Scraper · Outdoor



- **Clean** – Surface cleats effectively remove and trap dirt and sand below shoe level to prevent tracking
- **Safe** – Slip resistant even in wet environments; certified high-traction by the National Floor Safety Institute (NFSI)
- **Durable** – Grease/oil proof; chemical resistant
- **Easy to Clean** – Lightweight flexible design ensures easy handling and cleaning (shake off soil and hose off); can be commercially laundered or autoclave sterilized

## SIZES

2'5" x 3'\*

3' x 5'\*

3' x 10'\*

4' x 6'\*

4' x 8'

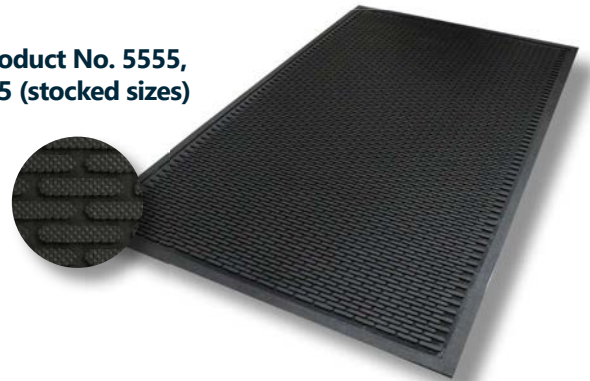
6' x 6'

6' x 8'

\*Indicates a stocked size  
Please note, mat sizes are approximate as rubber shrinks and expands in conjunction with temperature and time. Tolerable manufacturing size variance is 3-5%.



Product No. 5555,  
555 (stocked sizes)



# SUPERSRAPE PLUS®

Scraper · Outdoor



- **Clean** – Multi-directional surface cleats effectively remove and trap dirt and sand below shoe level to prevent tracking; drainable borders filter water off mat
- **Safe** – Slip-resistant even in wet environments; certified high-traction by the National Floor Safety Institute (NFSI)
- **Durable** – Grease/oil proof and chemical resistant
- **Easy to Clean** – Lightweight flexible design ensures easy handling and cleaning (shake off soil and hose off); can be commercially laundered or autoclave sterilized

## SIZES

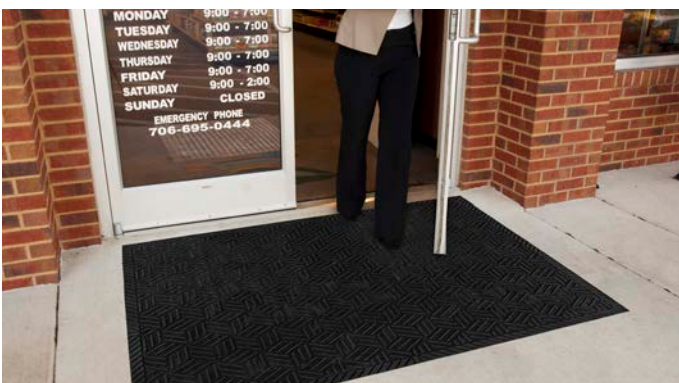
2.5' x 3'

3' x 5'

3' x 10'

4' x 6'

Please note, mat sizes are approximate as rubber shrinks and expands in conjunction with temperature and time. Tolerable manufacturing size variance is 3-5%.



Product No. 5558







# FRONTIER™

Slip-Resistant · Indoor/Outdoor



- Spaghetti-like design filters dirt and moisture away from the surface
- Available with edging (sold separately)



## SIZES

2' X 3'	4' x 6'
3' x 5'	4' x 8'
3' x 10'	4' x 60'
3' x 60'	

Available in custom sizes with widths of 3' (36") and 4' (48") and whole foot lengths up to 60'. Please note, mat sizes are approximate as rubber shrinks and expands in conjunction with temperature and time. Tolerable manufacturing size variance is 3-5%.



With  
Edging

Without  
Edging

Product No. 437



# The Wonderful World of WaterHog® Mats

Since its introduction in 1986, WaterHog has become American's best-selling mat. Renowned for its bi-level design and water dam border, it's highly effective at stopping dirt and moisture, keeping floors clean and dry.

The WaterHog product line has grown substantially over the last three decades to include a wide array of patterns, colors, and sizes. With so many options and a unique nomenclature, selecting a WaterHog mat can seem challenging at first, but these steps are designed to simplify the selection process.

## 1. Pick Your Fabric Weight

### WaterHog®

24-ounce PET



The 24-ounce WaterHog and 30-ounce WaterHog Max product lines are made with PET, an eco-friendly polyester made from at least 90% recycled plastic.

### WaterHog® Max

30-ounce PET



## 2. Pick Your Pattern and Color

The WaterHog (24-ounce) line comes in two designs with 12 color options. The WaterHog Max (30-ounce) line comes in three designs with seven color options.

WaterHog  
Squares



WaterHog  
Diamond



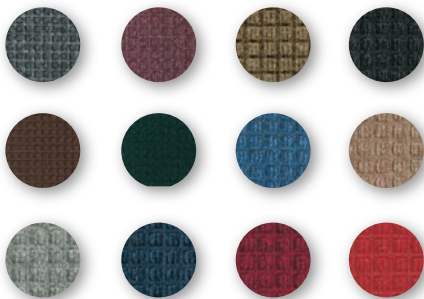
WaterHog  
Max Diamond



WaterHog Max  
Herringbone



WaterHog  
Plus



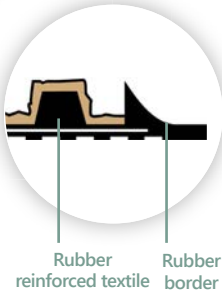


### 3. Pick Your Border

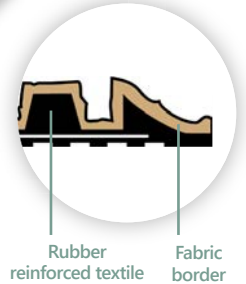
---



**Classic Rubber Border**



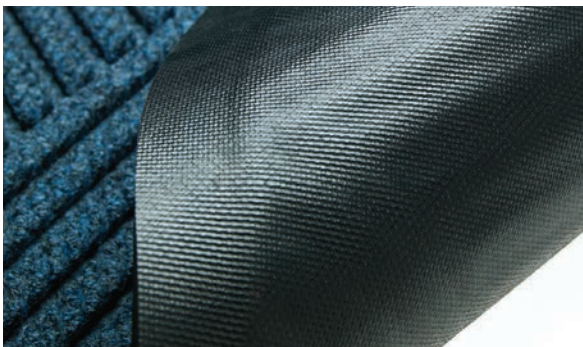
**Fashion Fabric Border**



### 4. Pick Your Backing

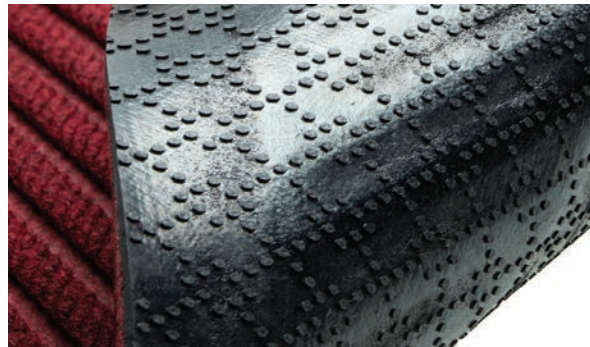
---

All WaterHog mats are backed with rubber. The standard backing is a 78-mil SBR (styrene-butadiene rubber) with either a smooth surface for placement on smooth/hard floors (like marble, tile, or wood) or with a universal backing surface for placement on carpeted floors.



**Smooth Backing**  
78-mil SBR

Recommended for hard floor surfaces



**Universal Backing**  
78-mil SBR

Designed to perform on both carpeted and smooth floors

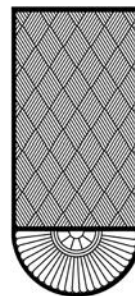
### 5. Add Some Optional "Grandeur"

---

If you're interested in adding a little grandeur to your entrance matting, you may want to consider a *WaterHog Max Grand* mat. The luxurious rounded mats can be placed at either or both ends of WaterHog Max Diamond.



Half Oval



One End



Two Ends

# WATERHOG®

Scraper/Wiper · Indoor/Outdoor



- **Clean & Dry** – Bi-level surface effectively scrapes dirt and moisture from shoes, trapping it beneath shoe level to prevent tracking; water dam border holds moisture keeping it off your floors (WaterHog mats can hold up to 1.5 gallons of water per square yard)
- **Durable** – Reinforced rubber nubs prevent pile from crushing and extend the performance life of the mat
- **Fade & Stain Resistant** – Solution-dyed PET fabric (24 ounces/square yard) is resistant to staining, dries quickly, and will not fade or rot
- **Safe** – Beveled edges provide a safe transition from floor to mat; certified high-traction by the National Floor Safety Institute (NFSI)
- **Eco-Friendly** – SBR rubber backing contains 20% post-consumer recycled rubber from car tires; PET surface is made from at least 90% recycled content reclaimed from plastic
- Available in 12 colors with choice of classic rubber border or fashion fabric border
- Feature 78-mil SBR rubber with universal cleated backing or smooth backing

## SIZES

18" x 27"	3' x 16'	4' x 20'
2' x 3'	3' x 20'	6' x 8'
3' x 4'	4' x 6'	6' x 12'
3' x 5'	4' x 8'	6' x 16'
3' x 8'	4' x 10'	6' x 20'
3' x 10'	4' x 12'	
3' x 12'	4' x 16'	

See price list for additional size options. Mats up to 40' are available with universal cleated or smooth backing. Mats over 40' are only available with smooth backing. Sizes are approximate.

Classic Border Product No. 200  
Fashion Border Product No. 280





# WATERHOG® CLEANSHIELD® STRIDE

Specialty · Indoor



- Raised nubs on the WaterHog mat remove dirt and moisture from shoes and trap it below foot level while the adhesive insert removes any remaining dirt or dust particles
- Adhesive inserts (CleanShield Stride Inserts) sold separately, each with 60 numbered layers
- Available with smooth or cleated backing
- Not recommended for wet areas

**Product No. 410 Frame Only, 411 Frame with Carpet, 412 Inserts (60 sheets)**



## SIZES

### Rubber Frame:

26.5" x 32"

36.5" x 46"

### Carpet/Rubber Frame:

26.5" x 63.5"

36.5" x 92.5"

Frames **do not** include CleanShield Stride Inserts

### Insert:

24" x 30"

34" x 44"

Please note, mat sizes are approximate as rubber shrinks and expands in conjunction with temperature and time. Tolerable manufacturing size variance is 3-5%.

# WATERHOG® DRAINABLE BORDER

Scraper/Wiper · Indoor/Outdoor



- **Clean & Dry** – Bi-level surface effectively scrapes dirt and moisture from shoes, trapping it beneath shoe level to prevent tracking
- **Durable** – Reinforced rubber nubs prevent pile from crushing and extend the performance life of the mat
- **Fade & Stain Resistant** - Solution-dyed PET fabric (24 ounces/squared yard) is resistant to staining, dries quickly, and will not fade or rot
- **Eco-Friendly** – Rubber backing contains 20% post-consumer recycled rubber from car tires; PET surface fabric is made from at least 90% recycled content reclaimed from plastic
- Available in 12 colors with smooth or cleated 78-mil SBR rubber backing

## SIZES

18" x 27"

2' x 3'

3' x 5'

3' x 10'

4' x 6'

4' x 8'

6' x 8'

Please note, mat sizes are approximate as rubber shrinks and expands in conjunction with temperature and time. Sizes are approximate.

Product No. 250



# WATERHOG® DIAMOND

Scraper/Wiper · Indoor/Outdoor



\*This colors is available in 3' and 4' widths only.



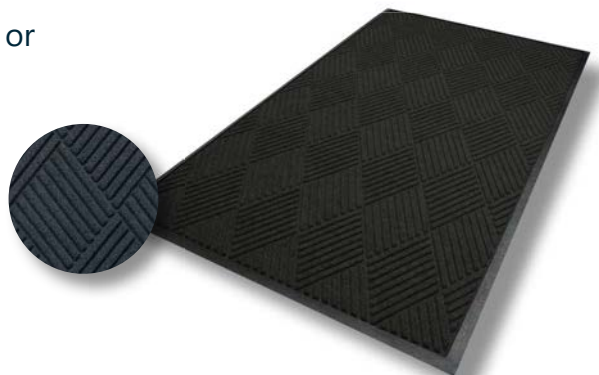
- **Clean & Dry** – Bi-level surface effectively scrapes dirt and moisture from shoes, trapping it beneath shoe level to prevent tracking; water dam border holds moisture keeping it off your floors (WaterHog mats can hold up to 1.5 gallons of water per square yard)
- **Durable** – Reinforced rubber nubs prevent pile from crushing and extend the performance life of the mat
- **Fade & Stain Resistant** – Solution-dyed fabric (24 ounces/square yard) is resistant to staining, dries quickly, and will not fade or rot
- **Safe** – Beveled edges provide a safe transition from floor to mat; certified high-traction by the National Floor Safety Institute (NFSI)
- **Eco-Friendly** – PET surface fabric is made from at least 90% recycled content reclaimed from plastic; rubber backing contains 20% post-consumer recycled rubber from car tires
- Available in 12 colors with choice of classic rubber border or fashion fabric border
- Feature 78-mil SBR rubber with universal cleated backing or smooth backing

## SIZES

2' x 3'	3' x 16'	4' x 20'
3' x 4'	3' x 20'	6' x 6'
3' x 5'	4' x 6'	6' x 8.4'
3' x 6'	4' x 8.4'	6' x 12.2'
3' x 8.4'	4' x 10'	6' x 16'
3' x 10'	4' x 12.2'	6' x 20'
3' x 12.2'	4' x 16'	

Specialty sizes available.  
Mats up to 40' are available with smooth and universal cleated backing options.  
Mats over 40' are available in smooth backing only.  
Sizes are approximate.

Classic Border Product No. 208  
Fashion Border Product No. 221





# WATERHOG® MAX DIAMOND

Scraper/Wiper · Indoor/Outdoor



Black Smoke



Chestnut  
Brown



Grey Ash



Indigo



Khaki



Maroon



Southern  
Pine



- **Clean & Dry** - Raised nubs remove dirt and moisture from shoes and trap it below foot level; water dam border holds up to 1.5 gallons of water per square yard, keeping your floors clean, dry, and safe

- **Eco-Friendly** - PET fabric is made from at least 90% recycled content reclaimed from plastic, and SBR rubber backing contains 20% recycled rubber from car tires

- **Safe** - Beveled edges provide a safe transition from floor to mat; certified high-traction by the National Floor Safety Institute (NFSI)

- **Durable** - Reinforced rubber nubs prevent pile from crushing and extend the performance life of the mat

- **Fade & Stain Resistant** - Solution-dyed PET fabric (30 ounces per square yard) is resistant to staining, dries quickly, and will not fade or rot

- Available in 7 colors with choice of classic rubber border or fashion fabric border

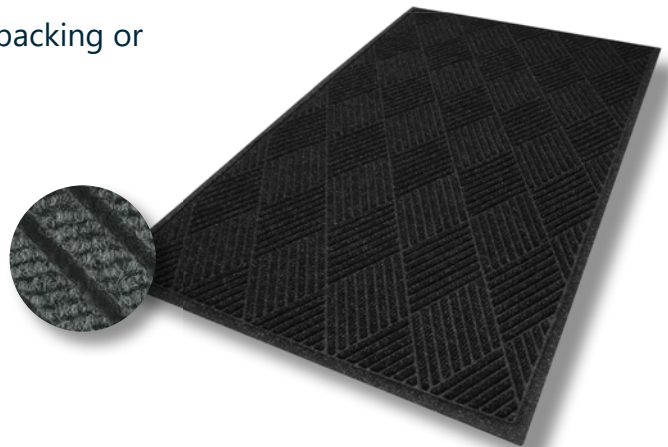
- Feature 78-mil SBR rubber with universal cleated backing or smooth backing

## SIZES

2' x 3'	3' x 16'	4' x 20'
3' x 4'	3' x 20'	6' x 6'
3' x 5'	4' x 6'	6' x 8.4'
3' x 6'	4' x 8.4'	6' x 12.2'
3' x 8.4'	4' x 10'	6' x 16'
3' x 10'	4' x 12.2'	6' x 20'
3' x 12.2'	4' x 16'	

Mats up to 40' are available with smooth and cleated backing options. Mats over 40' are available in smooth backing only. Tolerable manufacturing size variance is 3-5%.

Classic Border Product No. 2295  
Fashion Border Product No. 2297



# WATERHOG® MAX HERRINGBONE

Scraper/Wiper · Indoor/Outdoor



Black Smoke



Chestnut Brown



Grey Ash



Indigo



Khaki



Maroon



Southern Pine



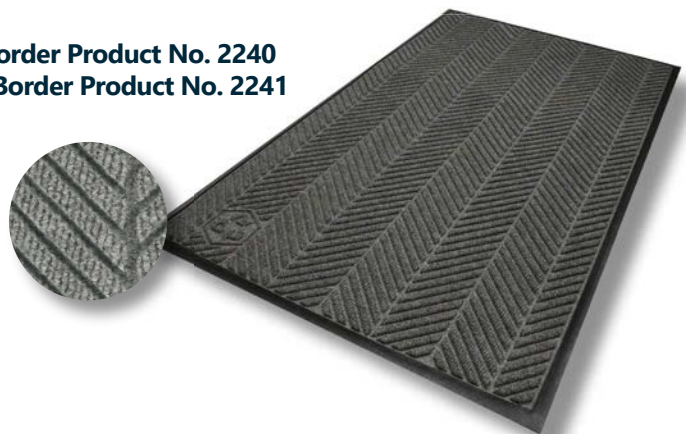
- **Clean & Dry** - Raised nubs remove dirt and moisture from shoes and trap it below foot level; water dam border holds up to 1.5 gallons of water per square yard, keeping your floors clean, dry, and safe
- **Eco-Friendly** - PET fabric is made from at least 90% recycled content reclaimed from plastic, and SBR rubber backing contains 20% recycled rubber from car tires
- **Safe** - Beveled edges provide a safe transition from floor to mat; certified high-traction by the National Floor Safety Institute (NFSI)
- **Durable** - Reinforced rubber nubs prevent pile from crushing and extend the performance life of the mat
- **Fade & Stain Resistant** - Solution-dyed PET fabric (30 ounces per square yard) is resistant to staining, dries quickly, and will not fade or rot
- Available in 7 colors with choice of classic rubber border or fashion fabric border
- Feature 78-mil SBR rubber with universal cleated backing or smooth backing

## SIZES

2' x 3'	3' x 20'	6' x 6'
3' x 4'	4' x 6'	6' x 8.4'
3' x 5'	4' x 8.4'	6' x 12.2'
3' x 8.4'	4' x 10'	6' x 16'
3' x 10'	4' x 12.2'	6' x 20'
3' x 12.2'	4' x 16'	
3' x 16'	4' x 20'	

Available in special sizes with widths of 3' (35"), 4' (45"), and 6' (71") and whole foot lengths up to 60'. Mats up to 40' are available with smooth and cleated backing options. Mats over 40' are available in smooth backing only. Tolerable manufacturing size variance is 3-5%.

Classic Border Product No. 2240  
Fashion Border Product No. 2241





# WATERHOG® MAX GRAND

Scraper/Wiper · Indoor/Outdoor



Black Smoke



Chestnut Brown



Grey Ash



Indigo



Khaki



Maroon



Southern Pine



- **Clean & Dry** – Bi-level surface effectively scrapes dirt and moisture from shoes, trapping it beneath shoe level to prevent tracking; water dam border holds moisture keeping it off your floors (WaterHog mats can hold up to 1.5 gallons of water per square yard)
- **Durable** – Reinforced rubber nubs prevent pile from crushing and extend the performance life of the mat
- **Fade & Stain Resistant** – Solution-dyed PET fabric (30 ounces per square yard) is resistant to staining, dries quickly, and will not fade or rot
- **Safe** – Beveled edges provide a safe transition from floor to mat; certified high-traction by the National Floor Safety Institute (NFSI)
- **Eco-Friendly** – Rubber backing contains 20% post-consumer recycled rubber from car tires; PET surface is made from at least 90% recycled content reclaimed from plastic
- Available in 7 colors with 78-mil SBR rubber with universal cleated backing or smooth backing

## SIZES

### HALF OVAL

3' x 1.8'  
4' x 2.3'  
6' x 3.3'

### ONE END

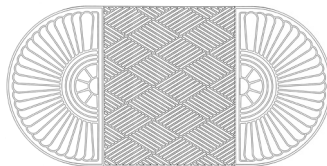
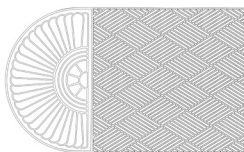
3' x 5.5'  
3' x 10'  
3' x 13.9'  
3' x 17.7'  
3' x 21.6'  
4' x 5.9'  
4' x 10.5'  
4' x 14.4'  
4' x 18.2'  
4' x 22'  
6' x 7'  
6' x 11.6'  
6' x 15.4'  
6' x 19.3'  
6' x 23.1'

### TWO ENDS

3' x 7.1'  
3' x 11.7'  
3' x 15.5'  
3' x 19.4'  
3' x 23.2'  
4' x 8'  
4' x 12.6'  
4' x 16.5'  
4' x 20.3'  
6' x 10.1'  
6' x 14.8'  
6' x 18.6'  
6' x 22.4'

Additional special sizes are available. Please note, mat sizes are approximate as rubber shrinks and expands in conjunction with temperature and time. Tolerable manufacturing size variance is 3-5%.

Half Oval: 2246 • Diamond + One End: 22248 • Diamond + Two Ends: 2249





# WATERHOG® PLUS

Scraper/Wiper · Indoor/Outdoor



Black Smoke



Chestnut



Grey Ash



Khaki



- **Clean & Dry** - Bi-level surface effectively scrapes dirt and moisture from shoes, trapping it beneath shoe level to prevent tracking; water dam border holds moisture keeping it off your floors (WaterHog mats can hold up to 1.5 gallons of water per square yard)
- **Durable** - Reinforced rubber nubs prevent pile from crushing and extend the performance life of the mat
- **Fade & Stain-Resistant** - Solution-dyed PET fabric (30 ounces/square yard) is resistant to staining, dries quickly, and will not fade or rot
- **Eco-Friendly** - PET fabric is made from at least 90% recycled content reclaimed from plastic
- **Safe** - Beveled edges provide a safe transition from floor to mat; certified high-traction by the National Floor Safety Institute (NFSI)
- Available in 4 colors with a classic (rubber) border and durable 90-mil nitrile rubber backing

## SIZES

2' x 3'

3' x 4'

3' x 5'

3' x 10'

4' x 6'

4' x 8'

5' x 7'

5' x 10'

6' x 12'

Please note, mat sizes are approximate as rubber shrinks and expands in conjunction with temperature and time. Tolerable manufacturing size variance is 3-5%.

Product No. 185



Unique swirl pattern is both attractive and effective at removing dirt and sand

# WATERHOG® DIAMONDCORD

Scraper/Wiper · Indoor



Black



Brown



- **Clean & Dry** - Bi-level surface effectively scrapes dirt and moisture from shoes, trapping it beneath shoe level to prevent tracking; water dam border holds moisture keeping it off your floors (WaterHog mats can hold up to 1.5 gallons of water per square yard)
- **Durable** - Reinforced rubber nubs prevent pile from crushing and extend the performance life of the mat
- **Fade & Stain-Resistant** - Solution-dyed polypropylene fabric is resistant to staining, dries quickly, and will not fade or rot
- **Safe** - Beveled edges provide a safe transition from floor to mat; certified high-traction by the National Floor Safety Institute (NFSI)
- **Eco-Friendly** - Rubber backing contains 20% post-consumer recycled rubber from car tires
- Available in 2 colors with a classic rubber border
- Feature 78-mil SBR rubber with universal cleated backing or smooth backing

## SIZES

2' x 3'	4' x 8.4'
3' x 4'	4' x 10'
3' x 5'	4' x 12.2'
3' x 6'	4' x 16'
3' x 8.4'	4' x 20'
3' x 10'	6' x 6'
3' x 12.2'	6' x 8.4'
3' x 16'	6' x 12.2'
3' x 20'	6' x 16'
4' x 6'	6' x 20'

Additional special sizes are available. Mats up to 40' are available with smooth and cleated backing options. Mats over 40' are available in smooth backing only. Please note, mat sizes are approximate as rubber shrinks and expands in conjunction with temperature and time. Tolerable manufacturing size variance is 3-5%.

Product No. 296





# WATERHOG® MASTERPIECE® SELECT

Scraper/Wiper · Indoor



Nutmeg



Ocean Wave



Pewter



Thunderstorm



- **Clean & Dry** - Bi-level surface effectively scrapes dirt and moisture from shoes, trapping it beneath shoe level to prevent tracking; water dam border holds moisture keeping it off your floors (WaterHog mats can hold up to 1.5 gallons of water per square yard)
- **Durable** - Reinforced rubber nubs prevent pile from crushing and extend the performance life of the mat
- **Fade & Stain-Resistant** - Solution-dyed polypropylene fabric (28 ounces per square yard) is resistant to staining, dries quickly, and will not fade or rot
- **Safe** - Beveled edges provide a safe transition from floor to mat; certified high-traction by the National Floor Safety Institute (NFSI)
- **Eco-Friendly** - Rubber backing contains 20% post-consumer recycled rubber from car tires
- Available in 4 colors with a classic rubber border
- Feature 78-mil SBR rubber with universal cleated backing or smooth backing

## SIZES

2' x 3'	4' x 8'
3' x 4'	4' x 10'
3' x 5'	4' x 12'
3' x 8'	4' x 16'
3' x 10'	4' x 20'
3' x 12'	6' x 8'
3' x 16'	6' x 12'
3' x 20'	6' x 16'
4' x 6'	6' x 20'

Additional special sizes are available. Mats up to 40' are available with smooth and cleated backing options. Mats over 40' are available in smooth backing only. Please note, mat sizes are approximate as rubber shrinks and expands in conjunction with temperature and time. Tolerable manufacturing size variance is 3-5%.

Product No. 265





# WATERHOG® MODULAR TILE

Scraper/Wiper · Indoor/Outdoor



Charcoal Dark Brown Evergreen Medium Grey



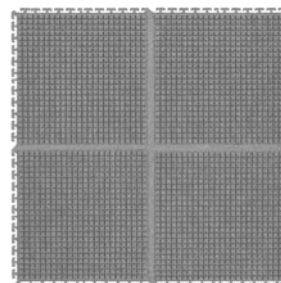
- **Clean & Dry** – Bi-level surface effectively scrapes dirt and moisture from shoes, trapping it beneath shoe level to prevent tracking
- **Durable** – Reinforced rubber nubs prevent pile from crushing and extend the performance life of the mat
- **Fade & Stain Resistant** – Solution-dyed PET fabric (24 ounces per square yard) is resistant to staining, dries quickly, and will not fade or rot
- **Easy to Install** – Tiles link together easily and are designed to be installed without glue or the need for professional installers
- Tiles are 7/16" thick and available in 18" or 36" tiles with 4 color options
- Feature 200-mil SBR cleated rubber backing
- Side and corner borders (sold separately) securely link to the outer perimeter of the installation

## SIZES

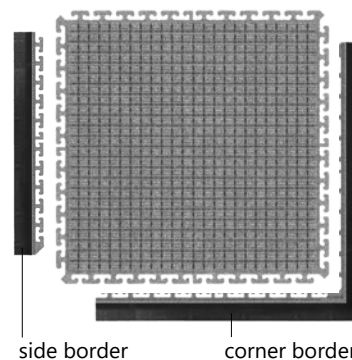
18" x 18"	36" x 36"
18" Side Border	36" Side Border
18" Corner Border	36" Corner Border
10 Tiles/Case	4 Tiles/Case

### Product No. 2210

36" x 36"



18" x 18"



# WATERHOG® MAX TILE

Scraper/Wiper · Indoor/Outdoor



Black Smoke



Chestnut  
Brown



Grey Ash



Indigo



Khaki



Maroon



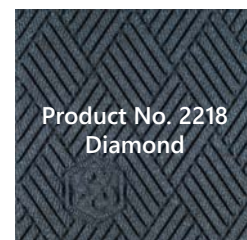
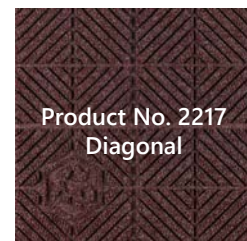
Southern Pine



- **Clean & Dry** - Bi-level surface effectively scrapes dirt and moisture from shoes, trapping it beneath shoe level to prevent tracking
- **Durable** - Reinforced rubber nubs prevent pile from crushing and extend the performance life of the tiles
- **Fade & Stain Resistant** - Solution-dyed PET fabric (30 ounces per square yard) is resistant to staining, dries quickly, and will not fade or rot
- **Safe** - Certified high-traction by the National Floor Safety Institute (NFSI)
- **Eco-Friendly** - PET fabric is made from 90% recycled content reclaimed from plastic, and SBR rubber backing contains 20% recycled rubber from car tires
- Available in 7 colors with choice of 3 patterns: diamond, diagonal, or geometric
- Ideal for surface or recessed installations
- Available with choice of 100-mil (1/4") SBR cleated rubber backing
- Tiles can be installed inside or outside; solvent-free adhesive is required for installation (sold separately)
- Worn or damaged tiles can be easily replaced
- Vinyl nosing available for border (sold separately)

## SIZES

18" x 18" x 1/4" (12 tiles/case)





# WATERHOG® MAX ROLL GOODS

Scraper/Wiper · Indoor/Outdoor



Black Smoke



Chestnut  
Brown



Grey Ash



Indigo



Khaki



Maroon



Southern Pine



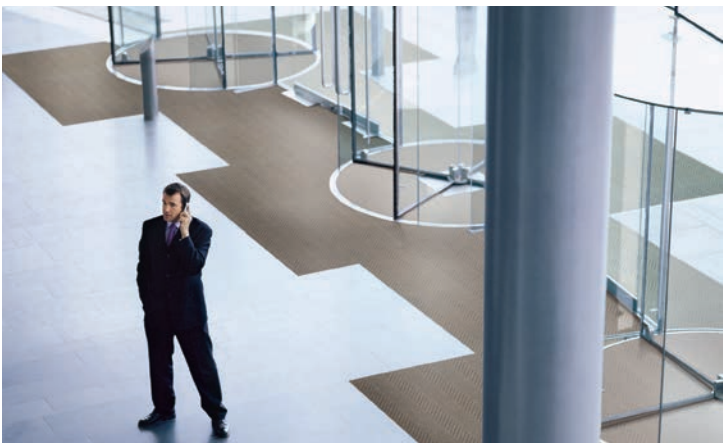
- **Clean & Dry** – Bi-level surface effectively scrapes dirt and moisture from shoes, trapping it beneath shoe level to prevent tracking
- **Durable & Fade Resistant** – Reinforced rubber nubs prevent pile from crushing and extend the performance life of the mat; solution-dyed PET fabric (30 ounces per square yard) is resistant to staining and fading
- **Safe** – Beveled edges provide a safe transition from floor to mat; certified high-traction by the National Floor Safety Institute (NFSI)
- **Eco-Friendly** – PET fabric is made from 90% recycled content reclaimed from plastic, and the SBR rubber backing contains 20% post-consumer recycled rubber from car tires
- Available in 7 colors with 78-mil SBR smooth rubber backing
- Designed to be installed like carpeting or loose-laid like a mat; vinyl nosing available for border (sold separately)

## SIZES

### 6' x 67' Roll

Custom sizes are available in whole foot widths from 3' to 12' and lengths up to 50'. Widths over 6' are manufactured by seaming together two mats and trimming as needed. The minimum size for a custom roll goods mat is 3' x 12'. The maximum custom size is 12' x 50'. Available with smooth backing only. Tolerable manufacturing size variance is 3-5%.

**Product No. 2271 (full roll),  
2272 (custom sizes)**





# BERBER ROLL GOODS

Carpeted (Wiper) · Indoor/Outdoor



*These colors are available for widths over 6' only.*



- **Durable** - Heavy 52-ounce solution-dyed fabric is stain resistant and has excellent light fastness; tough enough for outdoor use
- **Safe** - High-performance rubber backing helps hold the mat in place to minimize slipping hazards
- **Attractive** - Loop pile "berber" construction features a hobnail design for an upscale look
- **Easy to Clean** - Polypropylene fabric (52 ounces/square yard) is naturally resistant to staining and fading
- **Customizable** - In addition to being available in custom sizes, this product can be made with your custom logo inlayed (no setup fees)
- 20 colors to match any decor
- 3/8" thick and available in custom sizes from 3' x 12' to 12' X 50'
- Designed to be installed like carpeting or loose-laid like a mat; available with singed borders or vinyl nosing (sold separately)

## SIZES

**6' x 125' roll**  
**12' x 125' roll**

Custom sizes are available in widths from 3' to 12' and lengths up to 50'. Please note that widths over 6' may be seamed based on material availability.



**Product No. 2281 (full roll), 2282 (custom sizes)**

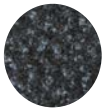


Vinyl Nosing

Singed Border

# CLASSIC BRUSH™

Carpeted (Wiper) · Indoor



Oynx



- **Superior Dirt-Stopping Power** - Coarse nylon fibers scrape and wipe dust and dirt from shoes
- **Resilient** - High-twist, heat-set nylon resists crushing to better trap dirt and extend the useful life of the mat
- **Fade Resistant** - Solution-dyed nylon won't fade in sunlight or with repeated washing; impervious to bleach
- **Safe** - Certified high-traction by the National Floor Safety Institute (NFSI)
- Commercially launderable when backed with nitrile rubber
- Available on nitrile rubber (65 mil and 90 mil) with multiple backing options to ensure the mat stays in place on your floor

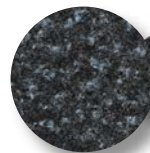
## SIZES

2' x 3'	4' x 10'
3' x 4'	5' x 6'
3' x 5'	5' x 10'
3' x 10'	6' x 10'
4' x 6'	6' x 12'
4' x 8'	

Custom sizes are available in widths from 3' to 6' and lengths up to 40'. 6' widths are available with smooth backing only. Mat sizes are approximate as rubber shrinks and expands in conjunction with temperature and time. Tolerable manufacturing size variance is 3-5%.



Product No. 110





# CLASSIC SOLUTIONS™

Carpeted (Wiper) · Indoor





- **Resilient** - High-twist, heat-set nylon resists crushing to better trap dirt and extend the useful life of the mat
- **Fade Resistant** - Solution-dyed nylon is resistant to fading and impervious to bleach
- **Safe** - Certified high-traction by the National Floor Safety Institute (NFSI)
- Commercially launderable when backed with nitrile rubber
- Available in 11 colors on choice of SBR (48 mil) or nitrile rubber (52 mil, 65 mil, 90 mil, or 100 mil) with multiple backing options to ensure the mat stays in place on your floor; rounded corners available

## SIZES

2' x 3'	5' x 8'
3' x 4'	5' x 10'
3' x 5'	5' x 12'
3' x 10'	6' x 8'
4' x 6'	6' x 10'
4' x 8'	6' x 12'
4' x 10'	

Custom sizes are available in widths from 3' to 6' and lengths up to 40'. Mat sizes are approximate as rubber shrinks and expands in conjunction with temperature and time. Tolerable manufacturing size variance is 3-5%.

### Classic Solutions

 Black Mink (47) 3', 4', 5'	 Black (66) 3', 4', 5', 6'	 Blue/Black (71) 3', 4', 5'	 Brown/Black (48) 3', 4', 5'
 Cheyenne Red (16) 3', 4'	 Deeper Navy (51) 3', 4', 5'	 Golden Brown (64) 3', 4', 5', 6'	 Midnight Grey (67) 3', 4', 5', 6'
 Oxford Grey (63) 3', 4'	 Red Pepper (76) 3', 4', 6'	 Slate Grey (65) 3', 4', 5', 6'	

Product No. 120





# CLASSIC SOLUTIONS PLUS™

Carpeted (Wiper) · Indoor



- **Resilient** - High-twist, heat-set nylon resists crushing to better trap dirt and extend the useful life of the mat
- **Fade Resistant** - Solution-dyed nylon is resistant to fading and impervious to bleach
- **Safe** - Certified high-traction by the National Floor Safety Institute (NFSI)
- Commercially launderable when backed with nitrile rubber
- Available in 5 colors on nitrile rubber (65 mil, 90 mil, or 100 mil) with multiple backing options to ensure the mat stays in place on your floor; rounded corners available

## SIZES

2' x 3'	5' x 8'
3' x 4'	5' x 10'
3' x 5'	5' x 12'
3' x 10'	6' x 8'
4' x 6'	6' x 10'
4' x 8'	6' x 12'
4' x 10'	

Custom sizes are available in widths from 3' to 6' and lengths up to 40'. Mat sizes are approximate as rubber shrinks and expands in conjunction with temperature and time. Tolerable manufacturing size variance is 3-5%.

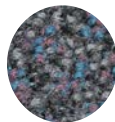
### Classic Solutions Plus



Brown Heather (56)  
3', 4', 5', 6'



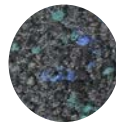
Charcoal Heather (57)  
3', 4', 5', 6'



Quarry (64)  
3', 4', 5'



Red Heather (55)  
3', 4'



Starry Night (58)  
3', 4'

Product No. 130



# CLASSIC MICROLUX<sup>TM</sup>

Carpeted (Wiper) · Indoor



Black



Blue/Black



Brown/Black



Midnight  
Grey



Red Pepper



Slate Grey



- **Superior Dust & Moisture Control** - Unique "microfiber" blend absorbs and retains 2.5 times more moisture and dust than standard carpeted mats
- **Resilient** - High-twist, heat-set nylon resists crushing to better trap dirt and extend the useful life of the mat
- **Fade Resistant** - Solution-dyed nylon is resistant to fading and impervious to bleach
- **Safe** - Certified high-traction by the National Floor Safety Institute (NFSI)
- Commercially launderable
- Available in 6 colors on durable nitrile rubber with two backing options (smooth or cleated) to ensure the mat stays in place on your floor

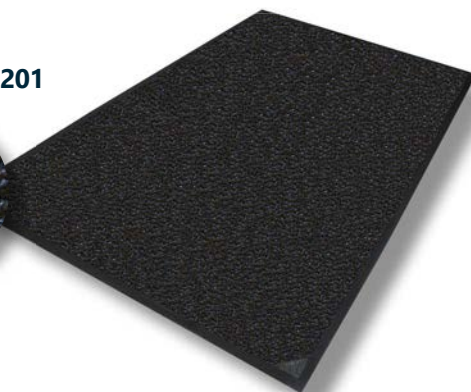
## SIZES

2' x 3'	4' x 8'
2.5' x 3'	5' x 8'
2.5' x 4'	5' x 10'
3' x 4'	5' x 12'
3' x 5'	6' x 8'
3' x 10'	6' x 10'
4' x 6'	6' x 12'

Custom sizes are available in widths from 3' to 6' and lengths up to 40'. Mat sizes are approximate as rubber shrinks and expands in conjunction with temperature and time. Tolerable manufacturing size variance is 3-5%.



Product No. 1201







Black



Brown/Black



Deeper  
Navy



Golden  
Brown



Midnight  
Grey



Red Pepper



Slate Grey



- **Superior Moisture & Dust Control** - Heavier carpet pile absorbs and retains 50% more moisture and dust than standard mats
- **Resilient** - High-twist, heat-set nylon resists crushing to better trap dirt and extend the useful life of the mat
- **Fade Resistant** - Solution-dyed nylon won't fade in sunlight or with repeated washing; impervious to bleach
- **Safe** - Certified high-traction by the National Floor Safety Institute (NFSI)
- Commercially launderable
- Available in 7 color options on durable 90-mil nitrile rubber with multiple backing options (smooth, universal cleated, or full cleated) to ensure the mat stays in place on your floor

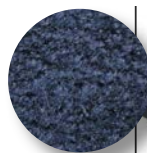
## SIZES

2' x 3'	4' x 8'
2.5' x 3'	5' x 8'
2.5' x 4'	5' x 10'
3' x 4'	5' x 12'
3' x 5'	6' x 8'
3' x 10'	6' x 10'
4' x 6'	6' x 12'

Custom sizes are available in widths from 3' to 6' and lengths up to 40'. Mat sizes are approximate as rubber shrinks and expands in conjunction with temperature and time. Tolerable manufacturing size variance is 3-5%.



Product No. 180





# COLORSTAR®

Carpeted (Wiper) · Indoor



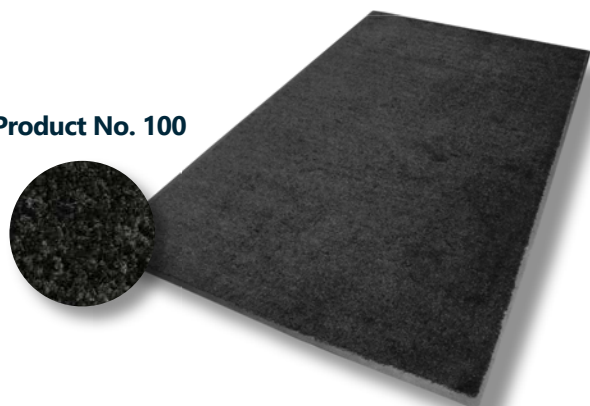
- **Eco-Friendly** – ColorStar mats are made with PET (polyethylene terephthalate), a type of polyester yarn that features 100% recycled content reclaimed from plastic
- **Fade-Resistant** – PET yarn has excellent color-fastness and is resistant to fading from repeated washing or cleaning.
- **Stain-Resistant** – PET yarn is naturally stain resistant, making it easy to remove stains from the mat
- **Safe** – Certified high-traction by the National Floor Safety Institute (NFSI)
- Available in 25 colors, with a choice of SBR (48 mil) or nitrile rubber (52 mil, 65 mil, 90 mil, or 100 mil) backing
- Commercially launderable (when backed with nitrile rubber)
- Available with logos and custom artwork (see ColorStar Impressions)

## SIZES

2' x 3'	4' x 10'
3' x 4'	5' x 8'
3' x 5'	5' x 10'
3' x 6'	5' x 12'
3' x 8'	6' x 8'
3' x 10'	6' x 10'
4' x 6'	6' x 12'
4' x 8'	

Custom sizes are available in widths from 3' to 6' and lengths up to 40'. Mat sizes are approximate as rubber shrinks and expands in conjunction with temperature and time. Tolerable manufacturing size variance is 3-5%.

Product No. 100





Anthracite

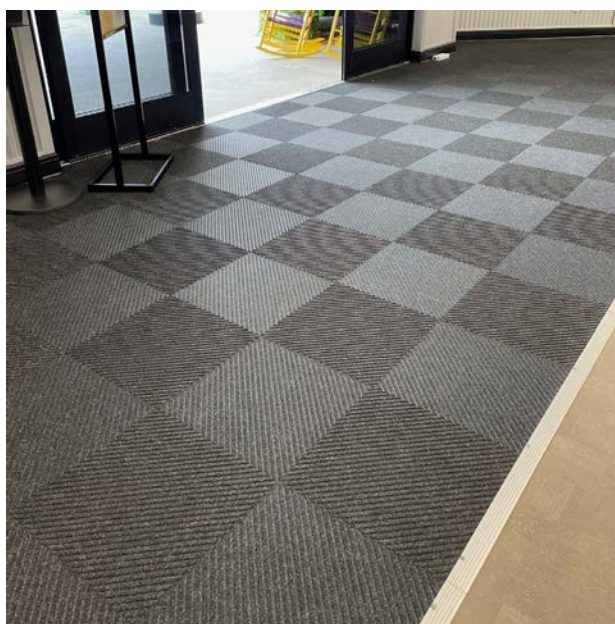


- **Eco-Friendly** – Made from 100% recycled PET materials, REPP-Tile can be recycled again and again, ensuring a sustainable closed-loop lifecycle.
- **Fade Resistant** – Designed to maintain its vibrant appearance, REPP-Tile withstands high traffic and harsh conditions without fading.
- **Stain Resistant** – PET is naturally stain resistant, making it easy to remove stains from the carpet tile.
- **Safe** – REPP-Tile's robust construction and secure installation option ensures a safe and stable surface for all users.
- Available in Broken Diagonal pattern in Anthracite color.
- Tiles are easy to install with TacFast tape (item #984 sold separately).
- Worn or damaged tiles can be easily replaced.

## SIZES

19.5" x 19.5"

Tolerable manufacturing size variance is 3-5%.



Product No. 684



## **LOGO MATS**

---

ColorStar® Impressions

ColorStar® Impressions HD

ColorStar® Impressions HD  
Custom Shape

WaterHog Impressions HD®

Berber Impressions HD

Berber Roll Goods Inlay

WaterHog® Max  
Roll Goods Inlay

WaterHog® Inlay

SuperScrape™ Impressions

Hog Heaven® Impressions

TuffComfort® Impressions

Floor Impressions

Bar Impressions



# COLORSTAR® IMPRESSIONS

Logo · Carpeted (Wiper) · Indoor



Product No. 60

- **Photographic-Quality Print** - Logos and designs are digitally printed at 76 dpi (dots per inch), making fine details, shading, and 3-D images achievable
- **Eco-Friendly** – PET (polyethylene terephthalate) carpet surface contains 100% recycled content reclaimed from plastic
- **Fade Resistant** - PET yarn has excellent color-fastness and is resistant to fading from repeated washing/cleaning
- **Stain Resistant** - PET yarn is naturally resistant to staining
- **Safe** - Certified high-traction by the National Floor Safety Institute (NFSI)
- Choose from 60 standard colors
- Available with choice of SBR (48 mil) or nitrile rubber (52 mil, 65 mil, 90 mil, or 100 mil)
- Commercially launderable (when backed with nitrile rubber)

## SIZES

2' x 3'	4' x 8'
3' x 4'	5' x 8'
3' x 5'	5' x 10'
3' x 10'	6' x 10'
4' x 6'	6' x 12'

Custom sizes are available in widths from 3' to 6' and lengths up to 40'. Mat sizes are approximate as rubber shrinks and expands in conjunction with temperature and time. Tolerable manufacturing size variance is 3-5%.



# COLORSTAR® IMPRESSIONS HD

Logo · Carpeted (Wiper) · Indoor



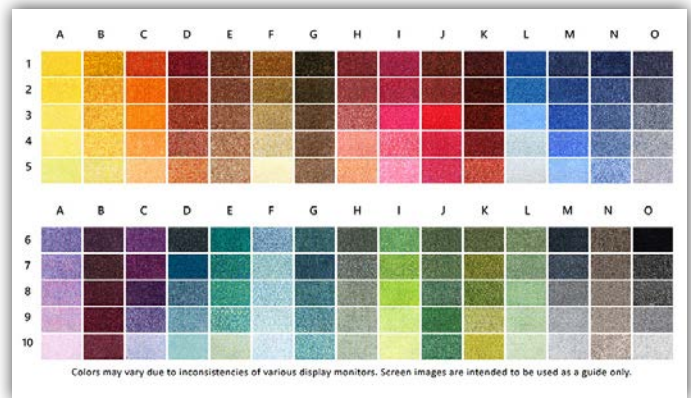
Product No. 973

- **Photographic-Quality Print** - Logos and designs are digitally printed at 76 dpi on 32-ounce per square yard carpet, making fine details, shading, and 3D images achievable
- **Eco-Friendly** – PET (polyethylene terephthalate) carpet surface contains 100% recycled content reclaimed from plastic
- **Fade Resistant** - PET yarn has excellent color-fastness and is resistant to fading from repeated washing/cleaning
- **Stain Resistant** - PET yarn is naturally resistant to staining
- Choose from 150 standard colors
- Available with choice of SBR (48 mil) or nitrile rubber (52 mil, 65 mil, 90 mil, or 100 mil)
- Commercially launderable (when backed with nitrile rubber)

## SIZES

2' x 3'	4' x 8'
3' x 4'	5' x 8'
3' x 5'	5' x 10'
3' x 10'	6' x 10'
4' x 6'	6' x 12'

Custom sizes are available in widths from 3' to 6' and lengths up to 40'. Mat sizes are approximate as rubber shrinks and expands in conjunction with temperature and time. Tolerable manufacturing size variance is 3-5%.





# COLORSTAR® IMPRESSIONS HD CUSTOM SHAPE

Logo · Carpeted (Wiper) · Indoor

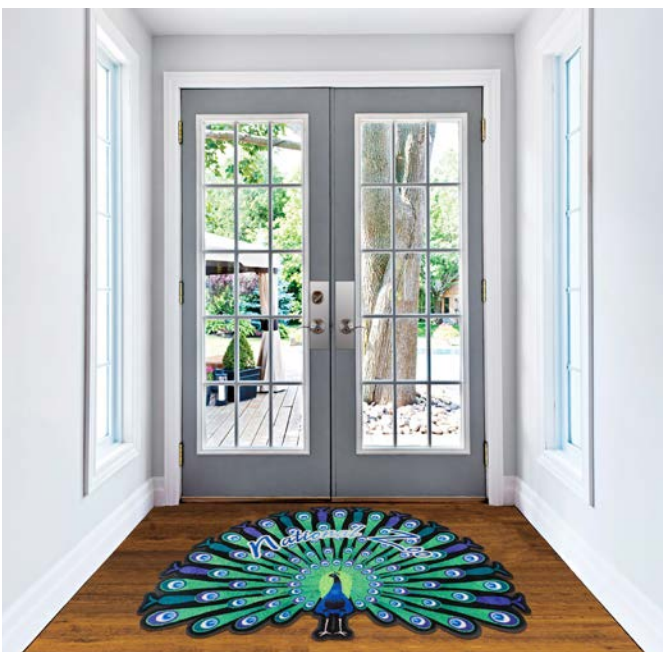


Product No. 970

- **Photographic-Quality Print** - Logos and designs are digitally printed at 76 dpi on 32-ounce per square yard carpet, making fine details, shading, and 3D images achievable
- **Eco-Friendly** – PET (polyethylene terephthalate) carpet surface contains 100% recycled content reclaimed from plastic
- **Fade Resistant** - PET yarn has excellent color-fastness and is resistant to fading from repeated washing/cleaning
- **Stain Resistant** - PET yarn is naturally resistant to staining
- **Durable** - Backed with durable 90-mil nitrile rubber that will not crack or curl
- Commercially launderable (although please note that certain shapes may not be suitable for laundering)

## SIZES

Custom shape mats are available in sizes up to 6' wide and 23' long.



	A	B	C	D	E	F	G	H	I	J	K	L	M	N	O
1															
2															
3															
4															
5															
6															
7															
8															
9															
10															

Colors may vary due to inconsistencies of various display monitors. Screen images are intended to be used as a guide only.



# WATERHOG IMPRESSIONS HD®

Logo · Scraper/Wiper · Indoor/Outdoor



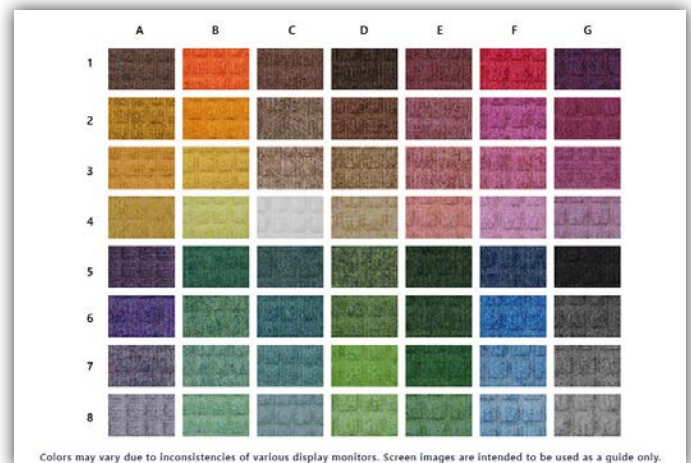
Classic Border Product No. 2381  
Fashion Border Product No. 2380

- **Clean & Dry** – Bi-level surface effectively scrapes dirt and moisture from shoes, trapping it beneath shoe level to prevent tracking; water dam border holds moisture keeping it off your floors (WaterHog mats can hold up to 1.5 gallons of water per square yard)
- **Durable** – Reinforced rubber nubs prevent pile from crushing and extend the performance life of the mat
- **Safe** – Beveled edges provide a safe transition from floor to mat; certified high-traction by the National Floor Safety Institute (NFSI)
- 56 standard color options
- Available with choice of classic (rubber) border or fashion (fabric) border; please note that only the rubber-bordered mat is commercially launderable
- Features 65-mil nitrile rubber with choice of smooth or universal cleated backing

## SIZES

2' x 3'	4' x 6'
3' x 4'	4' x 8'
3' x 5'	6' x 8'
3' x 10'	6' x 10'
3' x 12'	6' x 12'
3' x 16'	6' x 16'
3' x 20'	6' x 20'

Please note, mat sizes are approximate as rubber shrinks and expands in conjunction with temperature and time. Tolerable manufacturing size variance is 3-5%.





## BERBER IMPRESSIONS HD

Logo · Carpet (Wiper) · Indoor/Outdoor



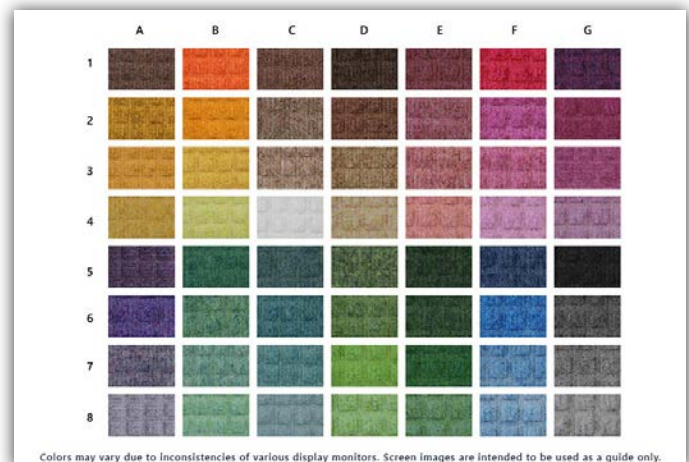
Product No. 2383

- **Durable** - The tight weave of Berber makes it durable enough to withstand heavy foot traffic while scraping dirt and moisture from shoes to minimize tracking
- **High Definition** - The Berber fabric features a smooth surface that allows for crisp printing definition
- **Eco-Friendly** – These mats are made with PET (polyethylene terephthalate), a type of polyester yarn that features 80% recycled content reclaimed from plastic drink bottles
- **Easy to Clean** - PET fabric is naturally resistant to staining
- **Attractive** - The loop pile “berber” construction features a hobnail design for an upscale look
- **Safe** - Durable rubber backing helps keep the mat in place to minimize slipping hazards
- 56 standard color options; choice of smooth or universal cleated rubber backing
- Intended for indoor or outdoor covered use; not intended for use in direct sunlight as fading will occur

### SIZES

2' x 3'	4' x 8'
3' x 4'	5' x 8'
3' x 5'	5' x 10'
3' x 10'	6' x 10'
4' x 6'	6' x 12'

Custom sizes are available in widths from 3' to 6' and lengths up to 40'. Mat sizes are approximate as rubber shrinks and expands in conjunction with temperature and time. Tolerable manufacturing size variance is 3-5%.





# BERBER ROLL GOODS INLAY

Logo · Carpet (Wiper) · Indoor/Outdoor



Product No. 2283

- **Durable** - Heavy 52-ounce solution-dyed fabric is stain resistant and has excellent light fastness; tough enough for outdoor use
- **Attractive** - Loop pile "berber" construction features a hobnail design for an upscale look
- **Safe** - High-performance rubber backing helps hold the mat in place to minimize slipping hazards
- **Easy to Clean** - Polypropylene fabric is naturally resistant to staining and fading
- 20 colors to choose from; Four background colors are available for widths over 6'.
- 3/8" thick and available in custom sizes from 3' x 12' to 12' x 50'
- Designed to be installed like carpeting or loose laid like a mat; available with singed borders or vinyl nosing (sold separately)

## CUSTOM SIZES

Available in 3' to 12' widths in sizes up to 12' x 50'. Available with smooth backing only. Widths over 6' will be seamed.





# WATERHOG® MAX ROLL GOODS INLAY

Logo · Scraper/Wiper · Indoor/Outdoor



Product No. 2268

- **Clean & Dry** - Bi-level surface effectively scrapes dirt and moisture from shoes, trapping it beneath shoe level to prevent tracking; water dam border holds moisture keeping it off your floors (WaterHog mats can hold up to 1.5 gallons of water per square yard)
- **Durable & Fade Resistant** - Reinforced rubber nubs prevent pile from crushing and extend the performance life of the mat; solution-dyed fabric is fade-resistant
- **Safe** - Beveled edges provide a safe transition from floor to mat; certified high-traction by the National Floor Safety Institute (NFSI)
- 17 logo colors and 7 background colors to choose from
- Designed to be installed like carpeting or loose-laid like a mat; vinyl nosing available for border (sold separately)

## CUSTOM SIZES

Available in 3' to 12' widths in sizes up to 12' x 50'. Available with smooth backing only. Widths over 6' will be seamed.

### BACKGROUND COLORS



### LOGO COLORS



# WATERHOG® INLAY

Logo · Scraper/Wiper · Indoor/Outdoor



**Classic Product No. 234**  
**Fashion Product No. 235**

\*These colors are only available in 3' and 4' widths.

- **Clean & Dry** - Bi-level surface effectively scrapes dirt and moisture from shoes, trapping it beneath shoe level to prevent tracking; water dam border holds moisture keeping it off your floors (WaterHog mats can hold up to 1.5 gallons of water per square yard)
- **Durable & Fade Resistant** - Reinforced rubber nubs prevent pile from crushing and extend the performance life of the mat; solution-dyed fabric is fade-resistant
- **Safe** - Beveled edges provide a safe transition from floor to mat; certified high-traction by the National Floor Safety Institute (NFSI)
- **Eco-Friendly** - Rubber backing contains 20% post-consumer recycled rubber from car tires
- 19 fabric colors to choose from
- Available with choice of classic rubber border or fashion fabric border
- Features 78-mil SBR rubber with choice of smooth or universal cleated backing

## SIZES

2' x 3'	4' x 10'
3' x 4'	4' x 12'
3' x 5'	4' x 16'
3' x 10'	4' x 20'
3' x 12'	6' x 8'
3' x 16'	6' x 12'
3' x 20'	6' x 16'
4' x 6'	6' x 20'
4' x 8'	

Available in special sizes with widths of 3' (35"), 4' (45"), and 6' (70") and whole foot lengths up to 20'. Please note, mat sizes are approximate as rubber shrinks and expands in conjunction with temperature and time. Tolerable manufacturing size variance is 3-5%.





# SUPERSCAPE™ IMPRESSIONS

Logo · Scraper · Outdoor



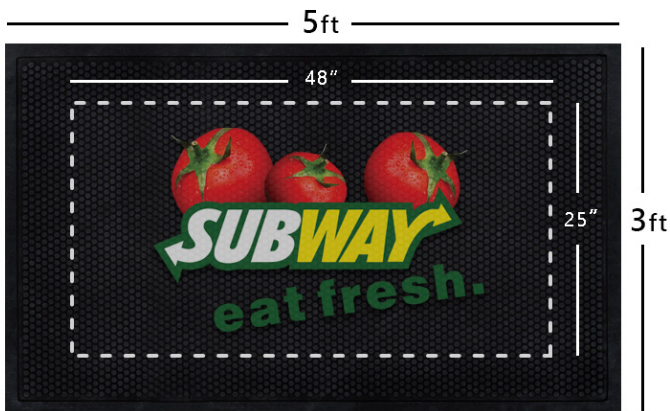
Product No. 3559

- **Clean** - Surface cleats effectively remove and trap dirt and sand below shoe level to prevent tracking
- **Safe** - Certified high-traction by the National Floor Safety Institute (NFSI)
- **Easy to Clean** - Lightweight flexible design ensures easy handling and cleaning (shake off soil and hose off); can be commercially laundered
- Features 3/16" thick nitrile rubber with circular surface cleats

## SIZES

2.5' x 3'	4' x 6'
3' x 4'	4' x 8'
3' x 5'	6' x 6'
3' x 10'	6' x 8'

Please note, mat sizes are approximate as rubber shrinks and expands in conjunction with temperature and time. Tolerable manufacturing size variance is 3-5%.





# HOG HEAVEN® IMPRESSIONS

Logo · Anti-Fatigue · Indoor



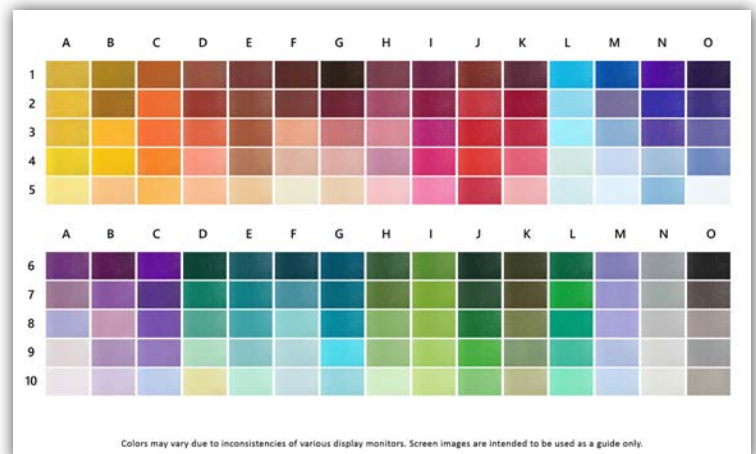
Product No. 3422

- **Comfortable** – 5/8" high-density nitrile-blended cushion helps eliminate pressure to the lower back and legs, providing superior comfort
  - **Safe** - Certified high-traction by the National Floor Safety Institute (NFSI); edges will not crack or curl and provide a safe transition from floor to mat
  - **Durable** – Nitrile-blended cushion provides years of useful service life; cushion is molded, not glued, to the nitrile rubber surface so it will not separate
  - **Versatile** - Welding safe; grease/oil resistant; chemical resistant
- \*Please note that the polymeric film with your logo/imprint will be less resistant to elements than the mat.

## SIZES

2' x 3'  
3' x 5'  
4' x 6'

Please note, mat sizes are approximate as rubber shrinks and expands in conjunction with temperature and time. Tolerable manufacturing size variance is 3-5%.



# TUFFCOMFORT® IMPRESSIONS

Logo · Anti-Fatigue · Indoor



Product No. 5232

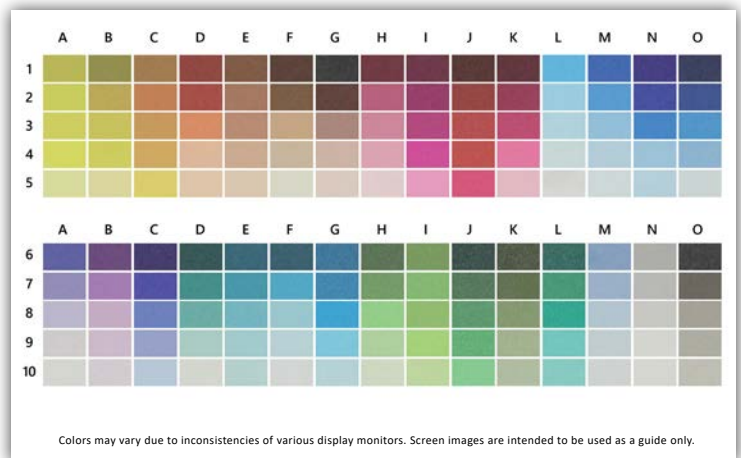
- **Photographic-quality Printing** – Logos and designs are digitally printed making fine details, shading, and 3D images achievable
- **Comfortable** – High-density, open cell polyurethane foam helps eliminate pressure to the lower back and legs, providing superior comfort
- **Easy to Clean** – PVC-free polyurethane synthetic leather surface is easy to clean - hose off or sweep
- Features 5/8" thick polyurethane foam cushion with a synthetic leather surface
- Available in 150 standard color options

## SIZES

2' x 3' (22"x32")

2' x 6' (22"x72")

Please note, mat sizes are approximate. Tolerable manufacturing size variance is up to 3%.





# FLOOR IMPRESSIONS

Logo · Promotional Mat · Indoor



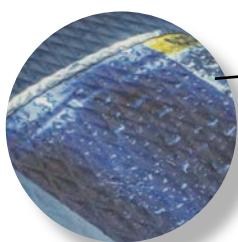
Product No. 3425

- **Photographic-Quality Print** – Logos and designs are digitally printed making fine details, shading, and 3D images achievable
- **Safe** - Edges will not crack or curl and provide a safe transition from floor to mat; mats provide floor protection
- **Easy to Clean** - Lightweight flexible design ensures easy handling and cleaning
- Features 3/16" thick nitrile rubber with a diamond surface

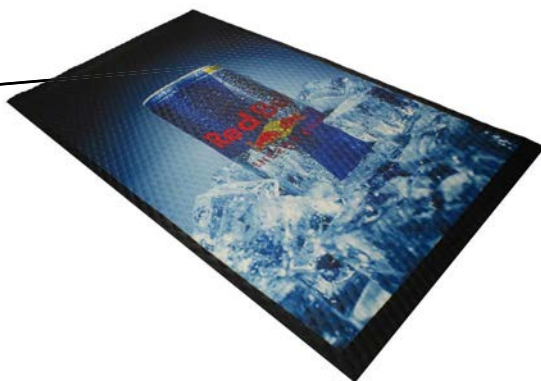
## SIZES

2' x 3'  
2.5' x 3'  
3' x 4'  
3' x 5'  
3' x 10'  
4' x 6'

Available in custom sizes with widths of 3' (34") and lengths up to 117"; and with widths of 4' (46") and lengths up to 93" long. Please note, mat size is approximate as rubber shrinks and expands in conjunction with temperature and time. Tolerable manufacturing size variance is 3-5%.



Diamond Surface



Colors may vary due to inconsistencies of various display monitors. Screen images are intended to be used as a guide only.



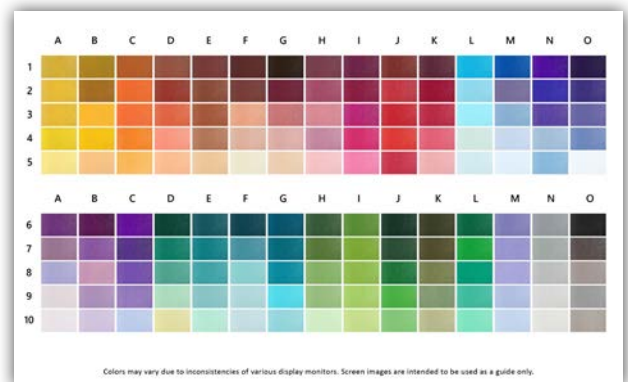
Product No. 5190

- Photographic-quality logos and artwork printed edge to edge
- 150 colors available
- Proudly made in the USA
- Minimum order quantity of 20 (please note that minimum order is per design and per size; different designs and sizes cannot be combined to meet the 20 mat minimum)

## SIZES

3.5" x 21"  
14" x 14"

Mat sizes are approximate as rubber shrinks and expands in conjunction with temperature and time. Tolerable manufacturing size variance is 3-5%.





## **ANTI-FATIGUE MATS**

---

Hog Heaven®

Hog Heaven® Tiles

Hog Heaven® Drainable Tiles

Hog Heaven® Electrically Conductive

Hog Heaven® Marble

Hog Heaven® Fashion

Hog Heaven® Knee Guard

TuffComfort® Standing Desk Mat

TuffComfort® Max

DuraComfort

Cushion Complete

Comfort Premier

Cushion Select

Comfort Station Max

Comfort Flow™

Comfort Scrape™

Steady Comfort™

Wet Step®

Sure Cushion Mats

# The Benefits of ANTI-FATIGUE MATS

**Anti-Fatigue mats** alleviate stress to the back and legs by providing a cushioned surface to stand on.

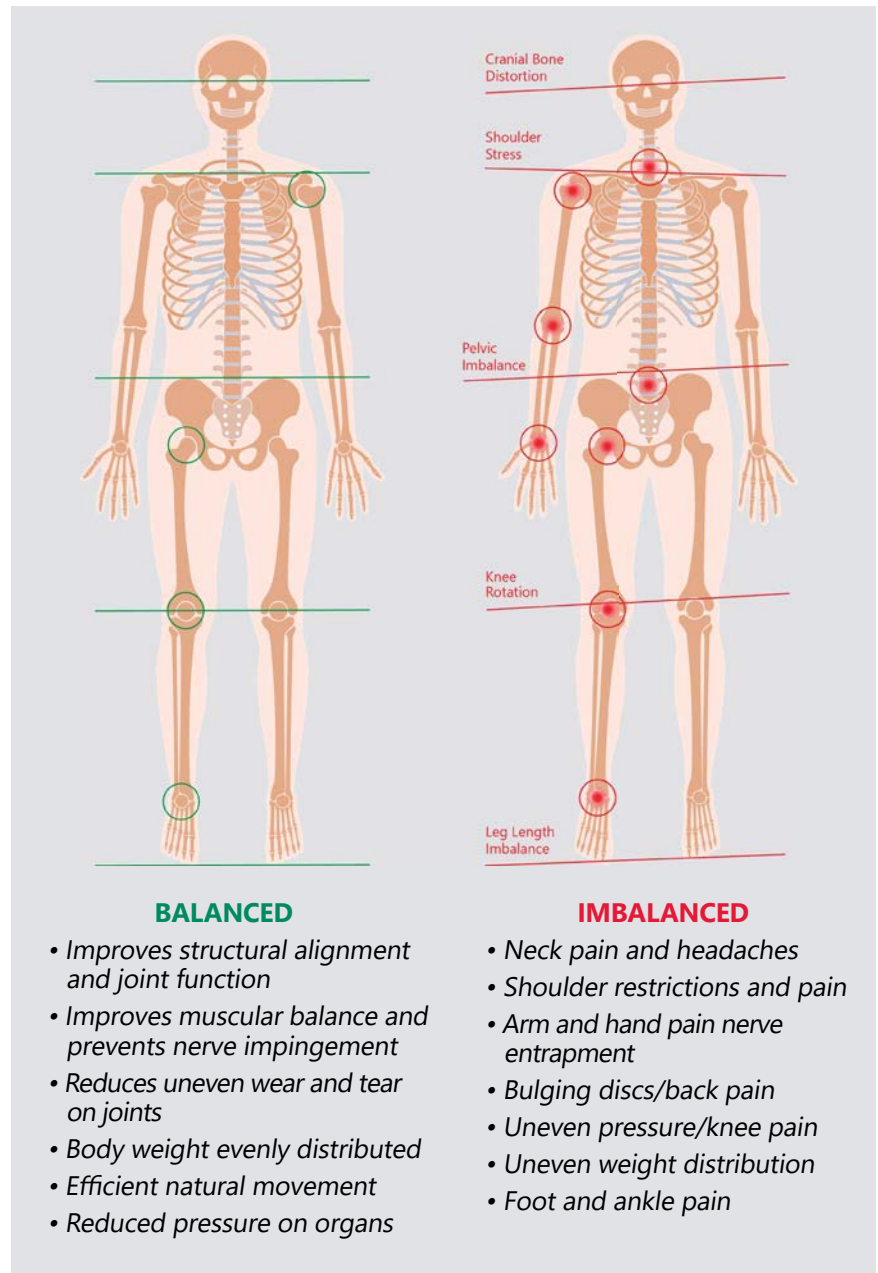
**Anti-Fatigue mats** are perfect for people who have to stand or work in the same place for continual periods of time.

**Anti-Fatigue mats** are recommended for a wide variety of industries and are commonly placed in various applications such as:

- Production or assembly lines
- Stand Up Desks or Workstations
- Kitchens
- Cashier Desks
- Laboratories and many more

**M+A Matting Anti-Fatigue mats** have been shown to do the following:

- **REDUCE ENERGY CONSUMPTION BY UP TO 50%** in the supporting muscles such as those in the leg and the lower back, when compared to standing on a hard floor
- **REDUCE FATIGUE** by promoting subtle movement in the leg and calf muscles, resulting in increased blood and oxygen flow



## Safety and Ergonomics

Mats are used throughout facilities in numerous other capacities where safety is a must and anti-fatigue comfort is essential to the health and well being of employees.

- Slip and falls are the smaxnd leading cause of all workplace injuries according to Liberty Mutual Workplace Index. As many as 25,000 people a day are victims of slip and fall accidents (NSC)
- Compensation and medical costs associated with employee slip-and-fall accidents total approximately \$70 billion annually (NSC)
- The average cost of a slip and fall injury exceeds \$12,000 (Wausau Insurance)
- The average cost to defend a slip-and-fall lawsuit is \$50,000 (NFSI)
- Back injuries account for 25% of all worker compensation claims annually
- Cumulative Standing Trauma (CST) causes billions of dollars of loss annually due to reduced productivity, increased worker compensation, higher insurance rates, and absenteeism
- According to the American College of Occupational and Environmental Science, about 38% of workers in the United States suffer from fatigue

**Testing shows that ergonomic matting can reduce worker fatigue.**



# HOG HEAVEN®

Anti-Fatigue · Indoor



Hog Heaven (5/8") Product No. 421 (Black Border), 423 (Striped Border)  
Hog Heaven Max (7/8") Product No. 422 (Black Border), 424 (Striped Border)

- **Comfortable** - High-density nitrile-blended cushion helps eliminate pressure to the lower back and legs, providing superior comfort
- **Safe** - Certified high-traction by the National Floor Safety Institute (NFSI); sloped edges provide a safe transition from floor to mat
- **Durable** - Nitrile-blended cushion provides years of useful service life; cushion is molded, not glued, to the nitrile rubber surface so it will not separate; edges will not crack or curl
- **Versatile** - Welding safe; ESD rating of electrically conductive; chemical resistant; surface is grease/oil proof and cushion is grease/oil resistant
- Available in Hog Heaven (5/8" thickness) or Hog Heaven Max (7/8" thickness) with solid black or with OSHA-approved caution yellow borders on two sides
- Can be customized with your logo, design, or message (see Hog Heaven Impressions)

## SIZES

2' x 3'

3' x 5'

3' x 12'

4' x 6'

4.8' x 8'

Custom sizes are available in widths of 2' (23"), 3' (32"), 4' (46"), and 4.8' (58") and lengths up to 100'. Please note that mats over 60' will have up to 2 seams. Please note, mat sizes are approximate as rubber shrinks and expands in conjunction with temperature and time. Tolerable manufacturing size variance is 3-5%.



Yellow Stripped Border



Black Border



# HOG HEAVEN® TILES

Anti-Fatigue · Indoor



Modular Tile Product No. 4471 (18"), 4472 (36")

Linkable Product No. 4497 (Black Border), 4498 (Yellow Border)

- **Comfortable** – High-density, closed-cell nitrile rubber cushion provides excellent anti-fatigue qualities to reduce the pain and fatigue associated with standing for long periods of time
- **Safe** - Beveled edges provide a safe transition from floor to mat and will not crack or curl
- **Durable** – Nitrile-blended cushion provides years of useful life and is molded, not glued, to the nitrile rubber surface so it will not separate
- **Versatile** - Welding safe; grease/oil proof; chemical resistant; ESD rating of electrically conductive
- Tiles are ¾" thick and available with black or OSHA-approved caution yellow border
- Linkable can be linked together to create long runs and Modular Tiles can be linked to create custom configurations

## SIZES

### Modular Tiles:

Corner Tile  
21.875" x 21.875"  
39.875" x 39.875"

Side Tile  
18" x 21.875"  
36" x 36.875"

Center Tile  
18" x 18"  
36" x 36"

### Linkable:

Mat End  
39.875" x 43.75"

Mat Middle  
36" x 43.75"

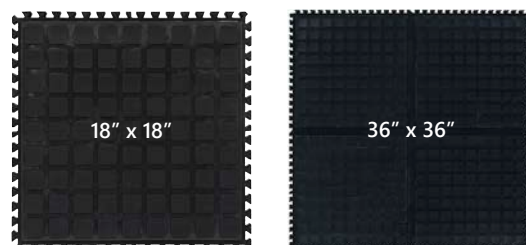
### Hog Heaven Modular Tiles



### Hog Heaven Linkable



### Hog Heaven Modular Center Tile





# HOG HEAVEN® WORKSTATION

Anti-Fatigue · Indoor



Product No. 4493 (Black Border), 4494 (Yellow Border)

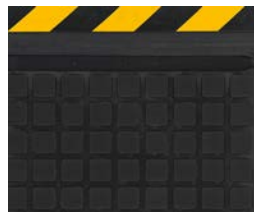
- **Comfortable** – High-density, closed-cell nitrile rubber cushion provides excellent anti-fatigue qualities to reduce the pain and fatigue associated with standing for long periods of time
- **Safe** - Beveled edges provide a safe transition from floor to mat and will not crack or curl
- **Durable** – Nitrile-blended cushion provides years of useful life and is molded, not glued, to the nitrile rubber surface so it will not separate
- **Versatile** - Welding safe; grease/oil proof; chemical resistant; ESD rating of electrically conductive
- Workstations are  $\frac{3}{4}$ " thick and available with black or OSHA-approved caution yellow border

## SIZES

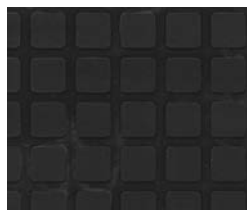
Workstation:

43.75" x 43.75"

Please note, mat sizes are approximate as rubber shrinks and expands in conjunction with temperature and time. Tolerable manufacturing size variance is 3-5%.



Yellow Striped Border



Black Border



Hog Heaven Workstation

# HOG HEAVEN® DRAINABLE TILES

Anti-Fatigue · Wet Area · Indoor



Modular Tiles Product No. 4411 (18"), 4412 (36")

Linkable Product No. 4413 (black border), 4414 (striped border)

Workstation Product No. 4415 (black border), 4416 (striped border)

- **Comfortable** – High-density, closed-cell nitrile rubber cushion provides excellent anti-fatigue qualities to help reduce the pain and fatigue associated with standing for long periods of time
- **Safe** – Drainage holes allow liquid to flow through; beveled edges provide a safe transition from floor to mat and will not crack or curl
- **Durable** – Nitrile rubber provides years of useful life and can withstand the rigors of almost any industrial environment, including heavy cart traffic
- **Versatile** – Welding safe; grease/oil proof; chemical resistant; ESD rating of electrically conductive
- Tiles are 3/4" thick and available with black or OSHA-approved yellow striped border
- Linkable can be linked together to create long runs, Modular Tiles can be linked to create custom configurations, and Workstations are ideal for standing areas

## SIZES

### Modular Tiles:

Corner Tile  
21.825" x 21.825"  
39.875" x 39.875"

Side Tile  
18" x 21.825"  
36" x 36.875"

Center Tile  
18" x 18"  
36" x 36"

### Linkable:

Mat End  
39.825" x 43.75"

Mat Middle  
36" x 43.75"

### Workstation:

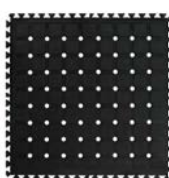
44" x 44"

### Hog Heaven Drainable Modular Tiles

Corner Tile



Center Tile

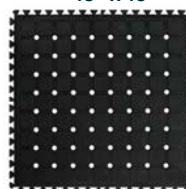


Side Tile

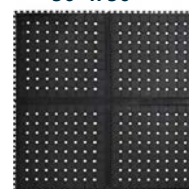


### Hog Heaven Drainable Modular Center Tiles

18" x 18"



36" x 36"



### Hog Heaven Drainable Linkable

Mat End



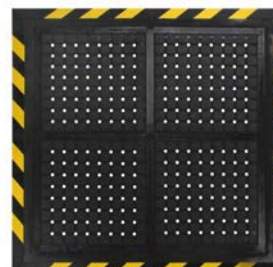
Mat Middle



Mat End



### Hog Heaven Drainable Workstation





# HOG HEAVEN® ELECTRICALLY CONDUCTIVE

Anti-Fatigue · Indoor



Hog Heaven Electrically Conductive (5/8") Product No. 4507 (Black Border), 4511 (Striped Border)  
Hog Heaven Electrically Conductive Max (7/8") Product No. 4509 (Black Border), 4513 (Striped Border)

- **Electrically Conductive** - Nitrile rubber surface is electrically conductive to quickly drain static electricity to help protect sensitive equipment from damage
- **Comfortable** - High-density nitrile-blended cushion helps eliminate pressure to the lower back and legs, providing superior comfort
- **Safe** - Certified high-traction by the National Floor Safety Institute (NFSI); sloped edges provide a safe transition from floor to mat
- **Durable** - Nitrile-blended cushion provides years of useful service life; cushion is molded, not glued, to the nitrile rubber surface so it will not separate; edges will not crack or curl
- **Versatile** - Welding safe; ESD rating of electrically conductive; chemical resistant; surface is grease/oil proof and cushion is grease/oil resistant
- Available in Hog Heaven Electrically Conductive (5/8" thickness) or Hog Heaven Electrically Conductive Max (7/8" thickness) with solid black or with OSHA-approved caution yellow borders on two sides
- Includes ground wire and snap

## SIZES

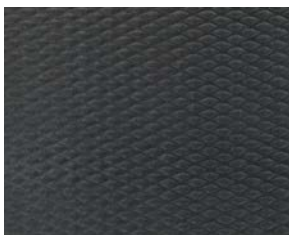
3' x 5'

4' x 6'

Please note, mat sizes are approximate as rubber shrinks and expands in conjunction with temperature and time. Tolerable manufacturing size variance is 3-5%.



Yellow Stripped Border



Black Border



Snap and Wire



# HOG HEAVEN® MARBLE

Anti-Fatigue · Indoor



Midnight Swirl

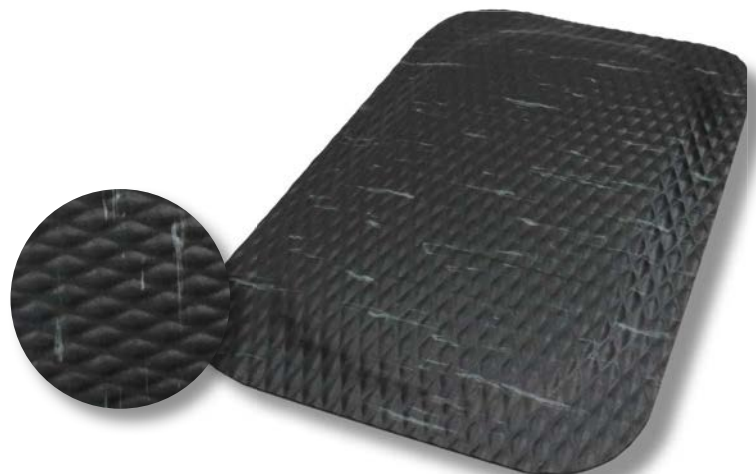
Hog Heaven Marble (5/8") Product No. 448  
Hog Heaven Marble Max (7/8") Product No. 449

- **Comfortable** - High-density, closed-cell nitrile-blended cushion helps eliminate pressure to the lower back and legs, providing superior comfort; smooth top allows workers to pivot freely
- **Safe** - Certified high-traction by the National Floor Safety Institute (NFSI); sloped edges provide a safe transition from floor to mat
- **Durable** - Surface is molded, not glued, to the nitrile-blended cushion so it will not separate
- **Easy to Clean** - Smooth diamond-patterned vinyl surface is easy to clean
- Available in Hog Heaven Marble (5/8" thickness) or Hog Heaven Marble Max (7/8" thickness) and two neutral colors to blend with any décor

## SIZES

2' x 3'	3' x 7'
3' x 5'	3' x 8'
3' x 12'	3' x 9'
Additional Sizes:	3' x 10'
3' x 3'	3' x 11'
3' x 4'	3' x 13'
3' x 6'	3' x 14'

Custom sizes are available in 3' (32") and 4' (46") widths and whole foot lengths up to 60'. Please note, mat sizes are approximate as rubber shrinks and expands in conjunction with temperature and time. Tolerable manufacturing size variance is 3-5%.





# HOG HEAVEN® FASHION

Anti-Fatigue · Indoor



Hog Heaven Fashion (5/8") Product No. 441  
Hog Heaven Fashion Max (7/8") Product No. 442

- **Comfortable** - High-density, closed-cell nitrile-blended cushion helps eliminate pressure to the lower back and legs, providing superior comfort
- **Safe** - Certified high-traction by the National Floor Safety Institute (NFSI); edges will not crack or curl and provide a safe transition from floor to mat
- **Durable** - Solution-dyed fabric surface is fade-resistant and molded, not glued, to the nitrile-blended cushion so it will not separate
- **Attractive** - Available in four neutral colors to blend with virtually any décor
- Available in Hog Heaven Fashion (5/8" thickness) or Hog Heaven Fashion Max (7/8" thickness)

## SIZES

2' x 3'

3' x 5'

3' x 12'

Custom sizes are available in 3' (32") widths and whole foot lengths up to 60'. Please note, mat sizes are approximate as rubber shrinks and expands in conjunction with temperature and time. Tolerable manufacturing size variance is 3-5%.



# HOG HEAVEN® KNEE GUARD

Anti-Fatigue · Indoor/Outdoor



- **Comfortable** - 7/8" cushion reduces knee trauma and lower back stress
- **Clean** - Closed-cell nitrile-blended rubber foam will not absorb liquids, and the 100% nitrile rubber surface easily wipes clean with soap and water
- **Safe** - Certified high-traction by the National Floor Safety Institute (NFSI)
- **Durable** - Welding safe; chemical resistant; surface is grease/oil proof, cushion is grease/oil resistant
- **Versatile** - When you need a welding safe, chemical resistant, grease/oil proof surface, put the rubber side up; when you need additional traction on a slippery surface, put the rubber side down (foam side up) for added slip-resistance
- **Convenient** - Built-in handle enables easy transportation and storage
- Rubber surface has an ESD rating of electrically conductive

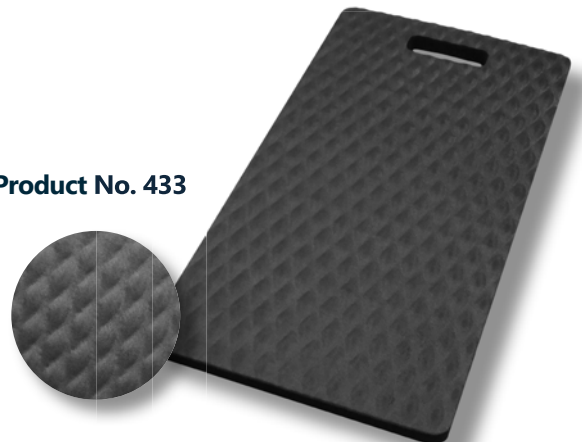
## SIZES

12" x 22"

Please note, mat sizes are approximate as rubber shrinks and expands in conjunction with temperature and time. Tolerable manufacturing size variance is 3-5%.



Product No. 433





# TUFFCOMFORT® MAX

Anti-Fatigue · Indoor



- **Comfortable** – High-density, open cell polyurethane foam cushion runs edge-to-edge and helps eliminate pressure to the lower back and legs, providing superior comfort
- **Durable** – Nitrile rubber surface is molded, not glued so it will not separate and can withstand the rigors of almost any industrial environment
- **Safe** – Certified high-traction by the National Floor Safety Institute; features beveled edges, providing a safe transition from floor to mat; edges will not crack or curl
- **Versatile** – Welding safe; ESD rating of electrically conductive
- **Easy to Clean** – Rubber surface is easy to clean - hose off or sweep
- Features 3/4" thick polyurethane foam cushion with a nitrile rubber surface
- Available with or without ground wire and snap

## SIZES

2'x3' (22"x32")

2'x6' (22"x70")

Please note, mat sizes are approximate. Tolerable manufacturing size variance is up to 3%.



Product No.  
5233 (mat only)  
5236 (mat with snap and wire)



# TUFFCOMFORT® STANDING DESK MAT

Anti-Fatigue · Indoor



Coal Black   Granite Grey   Sand



- **Comfortable** – Polyurethane cushion runs edge-to-edge and provides excellent anti-fatigue properties to alleviate pain from extended standing; overall mat thickness is  $\frac{3}{4}$ "
- **Durable** – PET fabric surface is permanently bonded to a durable rubber layer that makes the mat resistant to punctures from high heels
- **Safe** – Features beveled edges, providing a seamless transition from floor to mat; edges will not crack or curl
- **Stain Resistant** – PET fabric is naturally stain resistant, making it easy to remove stains from the mat
- **Eco-Friendly** – The PET fabric surface is made from at least 90% recycled content

## SIZES

2'x3' (22"x32")

2'x6' (22"x70")

Please note, mat sizes are approximate. Tolerable manufacturing size variance is up to 3%.



Product No.  
5230





# DURACOMFORT

Anti-Fatigue · Indoor



Grip Surface Product No. 475 (black border), 476 (striped border)

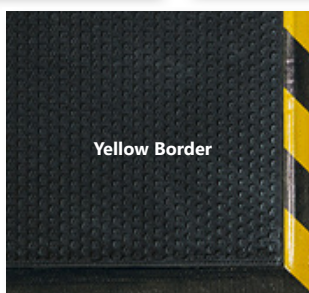
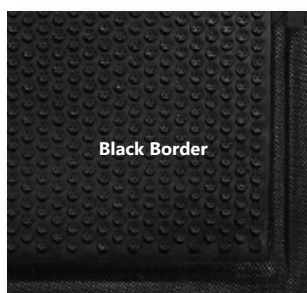
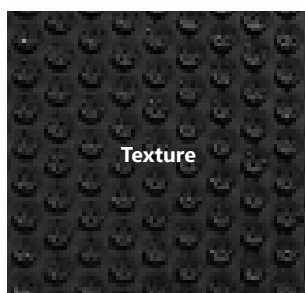
- **Comfortable** – 1/2" dense foam cushion and nitrile rubber surface provide excellent anti-fatigue qualities
- **Safe** – Certified high-traction by the National Floor Safety Institute (NFSI)
- **Durable** – Borders will not crack or curl; nitrile rubber surface is penetration proof
- **Versatile** - Welding safe; grease/oil proof; chemical resistant; ESD rating of electrically conductive
- Grip surface provides additional traction for wet environments
- Available in solid black or with OSHA-approved caution yellow borders

## SIZES

2' x 3'

3' x 5'

Please note, mat sizes are approximate as rubber shrinks and expands in conjunction with temperature and time. Tolerable manufacturing size variance is 3-5%.



# CUSHION COMPLETE

Anti-Fatigue · Indoor



- **Comfortable** - 5/8" thick nitrile/PVC-blended foam provides superior anti-fatigue properties
- **Clean** - Anti-microbial treatment provides lifetime protection from odors and degradation
- **Safe** - Beveled edges provide a safe transition from floor to mat; certified high-traction by the National Floor Safety Institute (NFSI)
- **Easy to Clean** - Lightweight and flexible for easy handling and cleaning
- Grease and oil resistant; chemical resistant
- Available with drainage holes for use in wet areas

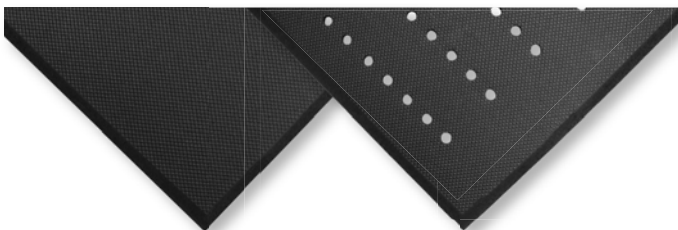
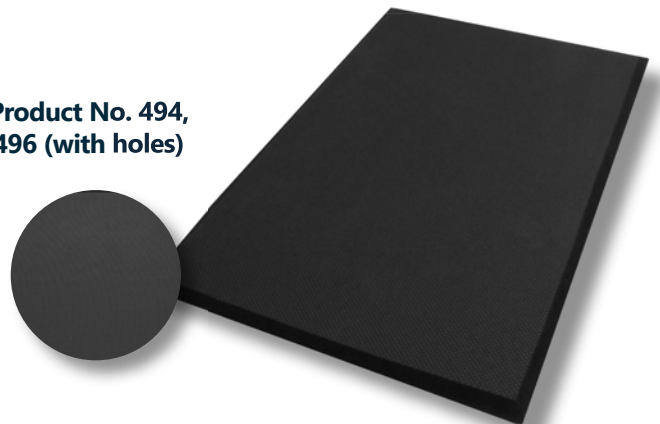
## SIZES

2' x 3'	3' x 10'
3' x 4'	4' x 6'
3' x 5'	4' x 8'

Available in custom sizes with widths of 3' (36"), 4' (48") and whole foot lengths up to 75'. Please note, mat sizes are approximate as rubber shrinks and expands in conjunction with temperature and time. Tolerable manufacturing size variance is 3-5%.



Product No. 494,  
496 (with holes)



Without Holes

With Holes





## COMFORT PREMIER

Anti-Fatigue · Wet Area · Indoor



- **Comfortable** - 1/2" thick nitrile foam provides superior anti-fatigue properties
- **Clean** - Anti-microbial treatment provides lifetime protection from odors and degradation
- **Safe** - Beveled edges provide a safe transition from the floor to the mat
- **Versatile** - Grease/oil proof; chemical resistant; welding safe
- **Easy to Clean** - Flexible construction makes this mat easy to handle and clean

### SIZES

2' x 3'

3' x 4'

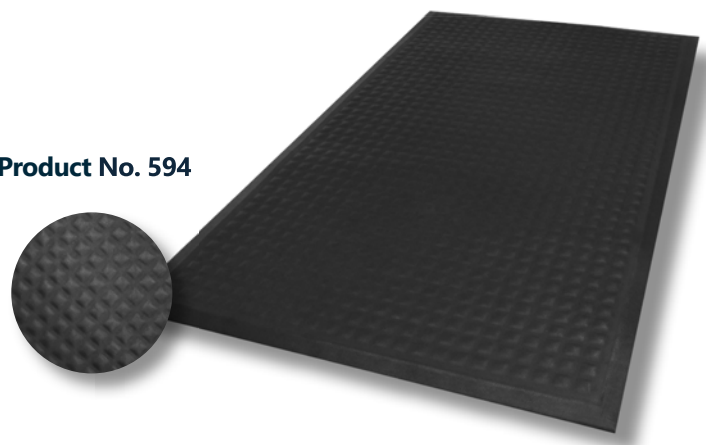
3' x 5'

4' x 6'

Please note, mat sizes are approximate as rubber shrinks and expands in conjunction with temperature and time. Tolerable manufacturing size variance is 3-5%.



Product No. 594



# CUSHION SELECT

Anti-Fatigue · Indoor



- **Comfortable** - 5/8" nitrile-blended closed-cell foam provides excellent anti-fatigue properties
- **Durable** - Diamond-pattern surface provides increased durability compared to ribbed surfaces which tend to peel and shave
- **Safe** - Beveled edges provide a safe transition from floor to mat; certified high-traction by the National Floor Safety Institute (NFSI)
- Grease and oil resistant; chemical resistant

## SIZES

2' x 3'

3' x 5'

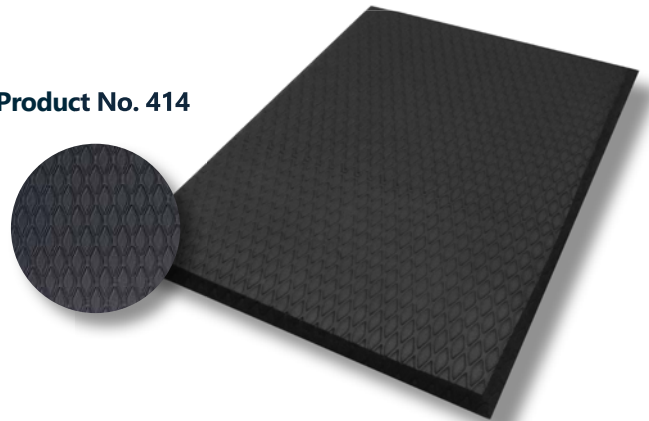
3' x 12'

4' x 6'

Custom sizes are available in 3' (36"), and 4' (48") widths and whole foot lengths up to 45'. Please note, mat sizes are approximate as rubber shrinks and expands in conjunction with temperature and time. Tolerable manufacturing size variance is 3-5%.



Product No. 414





# COMFORT STATION MAX

Anti-Fatigue · Wet Area · Indoor

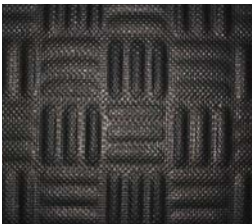


- **Comfortable** - 7/16" nitrile foam provides excellent anti-fatigue properties
- **Clean** - Anti-microbial treatment provides lifetime protection from odors and degradation
- **Safe** - Beveled edges provide a safe transition from the floor to the mat; certified high-traction by the National Floor Safety Institute (NFSI)
- **Versatile** - Grease/oil proof; chemical resistant; welding safe
- **Easy to Clean** - Flexible construction makes this mat easy to clean; can be autoclave sterilized
- Available with drainage holes for wet area application

## SIZES

2' x 3.2'	4' x 5.9'
3.2' x 5.3'	4' x 8.3'
3.2' x 8.3'	4' x 12.3'
3.2' x 12.3'	4' x 16.1'
3.2' x 16.1'	4' x 20.1'
3.2' x 20.1'	

Please note, mat sizes are approximate as rubber shrinks and expands in conjunction with temperature and time. Tolerable manufacturing size variance is 3-5%.



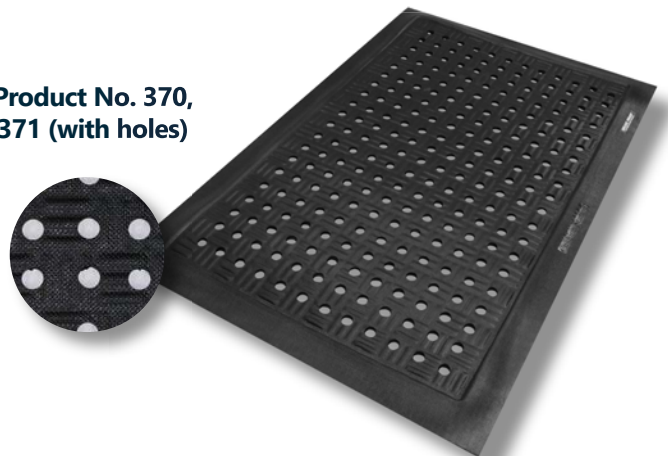
Cushion Station Max



Cushion Station Max with holes



Product No. 370,  
371 (with holes)



# COMFORT FLOW™

Anti-Fatigue · Wet Area · Indoor



- **Clean** - Drainage holes allow liquid to flow through; lifetime anti-microbial treatment prevents odors and degradation of the mat
- **Safe** - Beveled edges provide a safe transition from floor to mat; certified high-traction by the National Floor Safety Institute (NFSI)
- **Comfortable** - High-density closed-cell nitrile rubber cushion provides excellent anti-fatigue qualities
- **Versatile** - Grease and oil proof; chemical resistant; welding safe
- **Easy to Clean** - Lightweight flexible design ensures easy handling and cleaning
- Commercially launderable

## SIZES

2' x 3'  
3' x 5'  
3' x 9'  
4' x 6'

Please note, mat sizes are approximate as rubber shrinks and expands in conjunction with temperature and time. Tolerable manufacturing size variance is 3-5%.



Product No. 420





# COMFORT SCRAPE™

Anti-Fatigue · Indoor



- **Clean** - Bi-level design traps dirt/debris to prevent tracking; lifetime anti-microbial treatment prevents odors and degradation of the mat
- **Safe** - Beveled edges provide a safe transition from floor to mat; certified high-traction by the National Floor Safety Institute (NFSI)
- **Comfortable** - High-density closed-cell nitrile rubber cushion provides excellent anti-fatigue qualities
- **Versatile** - Grease and oil proof; chemical resistant; welding safe
- **Easy to Clean** - Lightweight flexible design ensures easy handling and cleaning
- Commercially launderable

## SIZES

2' x 3'

3' x 5'

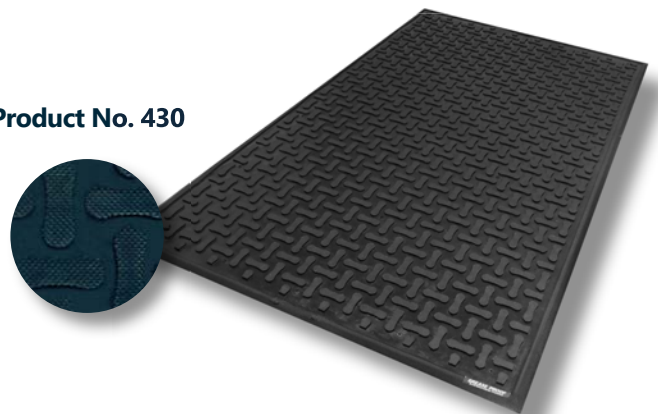
3' x 9'

4' x 6'

Please note, mat sizes are approximate as rubber shrinks and expands in conjunction with temperature and time. Tolerable manufacturing size variance is 3-5%.



Product No. 430



# STEADY COMFORT

Anti-Fatigue · Indoor



- **Safe** - Rubber nubs provide traction; beveled edges provide a safe transition from floor to mat; certified high traction by the National Floor Safety Institute (NFSI)
- **Comfortable** - High-density closed-cell nitrile rubber foam provides excellent anti-fatigue qualities
- **Clean** - Lifetime anti-microbial treatment prevents odors and degradation of the mat
- **Versatile** - Grease and oil proof; chemical resistant; welding safe
- **Easy to Clean** - Lightweight flexible design ensures easy handling and cleaning
- Commercially launderable

## SIZES

2' x 3'

3' x 5'

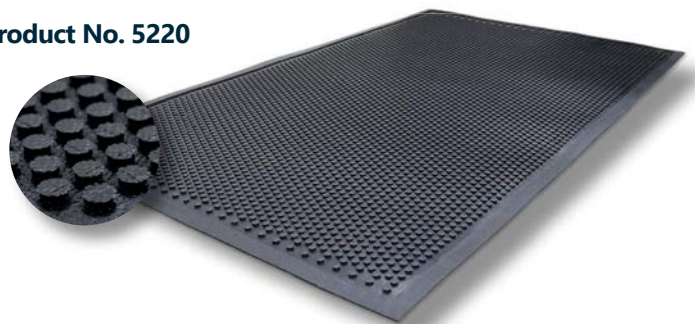
3' x 10'

4' x 6'

Please note, mat sizes are approximate as rubber shrinks and expands in conjunction with temperature and time. Tolerable manufacturing size variance is 3-5%.



Product No. 5220







## WET STEP®

Anti-Fatigue · Wet Area · Indoor/Outdoor



Blue



Grey



- **Slip-Resistant & Safe** - Drainage holes allow water to freely drain away; certified high traction by the National Floor Safety Institute (NFSI)
- **Comfortable** - 1/4" high-density nitrile foam provides excellent anti-fatigue properties and feels great to bare feet
- **Clean** - Anti-microbially treated to help prevent odors and degradation; mold and mildew resistant; anti-fungal
- **Durable** - Nitrile rubber foam is UV resistant and lasts considerably longer than PVC (vinyl) foam
- **Easy to Clean** - Can be autoclave sterilized, commercially laundered, or washed by hand
- Available in blue or grey

## SIZES

17" x 24"

2' x 3'

3' x 5'

3' x 10'

3' x 20'

Custom sizes are available in 3' (35") widths and whole foot lengths up to 20'. Please note, mat sizes are approximate as rubber shrinks and expands in conjunction with temperature and time. Tolerable manufacturing size variance is 3-5%.



Product No. 789





## SURE CUSHION

Anti-Fatigue · Indoor/Outdoor



### SURE CUSHION RIBBED

Product No. 415

- Sure Cushion Ribbed mats feature 3/8-inch ribbed PVC foam designed to provide floor protection in dry environments.

#### SIZES

2' x 60'  
3' x 60'  
4' X 60'

### SURE CUSHION TEXTURE

Product No. 425, 427 (yellow border)

- Sure Cushion Textured mats feature 3/8-inch textured PVC foam designed to provide floor protection in dry environments.
- Available in solid charcoal or charcoal with yellow borders on two sides.

#### SIZES

3' x 60'

### SURE CUSHION PRO

Product No. 428

- Sure Cushion Pro mats feature a 1/2-inch PVC foam that has beveled edges to provide a safe transition from the floor to the mat, all while providing floor protection and ergonomic benefits in dry environments.

#### SIZES

3' x 60'



## **SPECIALTY MATS**

---

Desk Chair Mats

ColorStar® Message Mats

CleanShield® Roll Goods

CleanShield® Plush Roll Goods

CleanShield® Universal

CleanShield® Urinal

Action™ Mat

Oil Magnet™ Pad

Safety Scrape™

Traction Tread

Traction Tread Grit

Switchboard

WaterHog® Forklift

# DESK CHAIR MAT

Specialty · Indoor


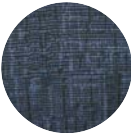



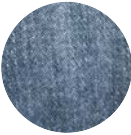
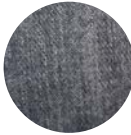


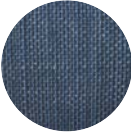

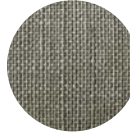
 Product No. 2285

- **Glides Easily** - 7/8" cushion reduces knee trauma and lower back stress
- **Skid-Resistant Floor Protection** - Closed-cell nitrile-blended rubber foam will not absorb liquids, and the 100% nitrile rubber surface easily wipes clean with soap and water
- **Easy to Clean** - Certified high-traction by the National Floor Safety Institute (NFSI)
- High-definition printing makes the mats uniquely reminiscent of different woven fabrics; Astella mimics a cross-hatch woven fabric; Stonewash looks like well-worn denim; Stratford offers a classic linen look.
- Each design is available in three colors - blue, grey and khaki
- Designed for placement on hard floors (will work on low-pile carpet, but not designed for anything softer)

## SIZES

3' x 4'

Please note, mat sizes are approximate as rubber shrinks and expands in conjunction with temperature and time. Tolerable manufacturing size variance is 3-5%.

		Blue	Grey	Khaki
Astella				
Stonewash				
Stratford				



# COLORSTAR® MESSAGE MATS

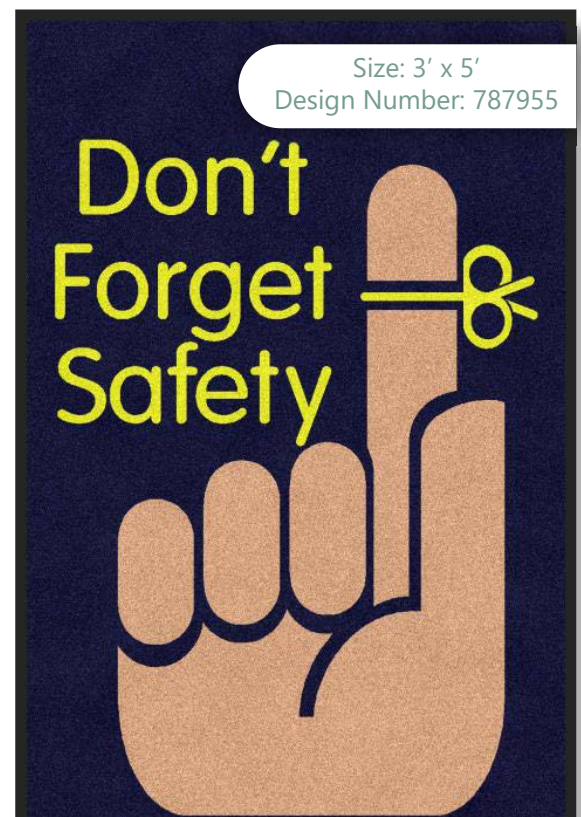
Logo · Carpeted (Wiper) · Indoor



- Provide important messages while capturing dirt and moisture to help reduce tracking and slip-and-fall accidents
- Feature standard messages regarding safety, quality, and for specific locations like coffee stations
- Available as ColorStar Impressions and ColorStar Impressions HD
- Certified high-traction by the National Floor Safety Institute (NFSI)

## SIZES

Available in a variety of sizes that vary by mat type and message.



# CLEANSHIELD® ROLL GOODS

Slip-Resistant · Indoor



Product No. 4450 CleanShield Roll Goods  
Product No. 4459 Cutting Board  
Product No. 4460 Cutting Knife

- **Keeps Floors Dry** - Moisture barrier keeps liquids from soaking through to the floor
- **Stays in Place** - Adhesive backing keeps mat flat and in place, even with heavy cart and buggy traffic
- **Safe** - Certified high-traction by the National Floor Safety Institute (NFSI)
- **Odor Resistant** - Anti-microbially treated for protection from odors
- **Dries Quickly** - Mat dissipates water quickly for fast drying time
- **Easy to Install** - Cut individual mats from the roll as needed
- **Hassle Free** - Can be left in place during daily cleaning; floor scrubbers, vacuums, and mops will pass right over without causing damage
- Will perform for up to 4 months under normal use.

## SIZES

2' x 25' roll  
3' x 50' roll  
3' x 100' roll





# CLEANSHIELD® PLUSH ROLL GOODS

Slip-Resistant · Indoor



Product No. 4457

- **Keeps Floors Dry** - Retains more than a gallon of water per 10 linear feet; moisture barrier keeps liquids from soaking through to the floor
- **Stays in Place** - Adhesive backing keeps mat flat and in place, even with heavy cart and buggy traffic
- **Safe** - Certified high-traction by the National Floor Safety Institute (NFSI)
- **Odor Resistant** - Anti-microbially treated for protection from odors
- **Dries Quickly** - Max-friendly PET fabric dissipates water quickly for fast drying time
- **Easy to Install** - Cut individual mats from the roll as needed
- **Hassle Free** - Can be left in place during daily cleaning; floor scrubbers, vacuums, and mops will pass right over without causing damage
- Will perform up to 4 months under normal use.

## SIZES

3' x 30' roll



# CLEANSHIELD® UNIVERSAL MATS

Specialty · Indoor



Product No. 4075

- **Minimizes Odors** – Silver ion fibers provide antimicrobial protection from odors and degradation
- **Protects Floors** – Seep-Guard barrier eliminates urine seepage, protecting your floors from damage caused by uric acid
- **Stays in Place** – Tacki-Back adhesive keeps the mat flat and in place
- **Dries Quickly** – Surface dissipates water quickly for fast drying time
- **Hassle Free** – Mats can be left in place during daily floor cleaning; floor scrubbers, mops, and brooms will pass right over them without causing damage
- **Safe** – Certified high-traction by the National Floor Safety Institute (NFSI)
- **Eco-Friendly & Attractive** – PET fabric surface is made from 76% post-industrial recycled content and features an attractive diamond pattern that provides an upscale look
- Designed for 30-day usage; easy-to-read TimeStrip® indicates when it's time to replace the mat (step on/push to initially activate)
- Sold by the case/box; 6 mats per case

## SIZES

21.25" X 20.25"

TimeStrip®



Seep Guard Barrier  
& Tacki-Back



Designed for dual use at commodes and urinals.



# CLEANSHIELD® URINAL MATS

Specialty · Indoor



Product No. 4065, 4465

- **Minimizes Odors** – Silver ion fibers provide antimicrobial protection from odors and degradation
- **Protects Floors** – Seep-Guard barrier eliminates urine seepage, protecting your floors from damage caused by uric acid
- **Stays in Place** – Tacki-Back adhesive keeps the mat flat and in place
- **Dries Quickly** – Surface dissipates water quickly for fast drying time
- **Hassle Free** – Mats can be left in place during daily floor cleaning; floor scrubbers, mops, and brooms will pass right over them without causing damage
- **Safe** – Certified high-traction by the National Floor Safety Institute (NFSI)
- **Eco-Friendly** – PET fabric surface is made from 76% post-industrial recycled content and features an attractive diamond pattern that provides an upscale look
- Designed for 30-day usage; easy-to-read TimeStrip® indicates when it's time to replace the mat (step on/push to initially activate)
- Sold by the case/box; 6 mats per case

## SIZES

Urinal:

17.25" x 20.5"

TimeStrip®



Seep Guard Barrier  
& Tacki-Back



## ACTION™ MAT

Absorbent · Indoor



Product No. 80

- Constructed with highly-absorbent cotton yarn (20 ounces/square yard)
- Nitrile rubber backing and borders provide excellent slip-resistance and are grease/oil proof
- Commercially launderable
- Available with choice of 52-mil, 65-mil, or 90-mil rubber with smooth, universal cleated, or full cleated backing

### SIZES

2' x 3'	3' x 10'
3' x 4'	4' x 6'
3' x 5'	4' x 8'

Custom sizes are available in 3' (35") and 4' (45") widths. Mat sizes are approximate as rubber shrinks and expands in conjunction with temperature and time. Tolerable manufacturing size variance is 3-5%.



Product No. 789





# OIL MAGNET™ PAD

Absorbent · Indoor



Product No. 2020

- Tufted at 28 ounces per square yard for excellent absorbency
- Cotton duck backing
- Taped borders
- Commercially launderable

## SIZES

19.5" x 20"

19.5" x 66"

38" x 66"

38" x 132"



Product No. 2020



# SAFETY SCRAPE™

Slip-Resistant · Indoor/Outdoor



- **Slip-Resistant** - Molded grip surface provides traction even in wet areas
- **Clean** - Surface cleats effectively remove and trap dirt and sand below shoe level to prevent tracking
- **Safe** - Certified high-traction by the National Floor Safety Institute (NFSI)
- **Durable** - Grease/oil proof; chemical resistant
- **Easy to Clean** - Lightweight flexible design ensures easy handling and cleaning (shake off soil and hose off); can be autoclave sterilized

## SIZES

2' x 3'

3' x 5'

3' x 10'

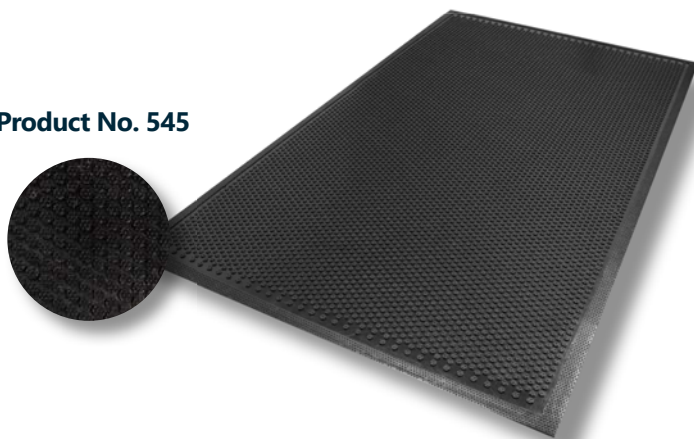
4' x 6'

4' x 10'

Please note, mat sizes are approximate as rubber shrinks and expands in conjunction with temperature and time. Tolerable manufacturing size variance is 3-5%.



Product No. 545





# TRACTION TREAD

Slip-Resistant · Indoor



- **Slip-Resistant & Safe** - Certified high-traction by the National Floor Safety Institute (NFSI)
- **Durable** - 1/8" solid nitrile rubber provides years of service life and will not crack or curl
- **Versatile** - Grease/oil proof; chemical resistant; welding safe
- ESD rating of electrically conductive

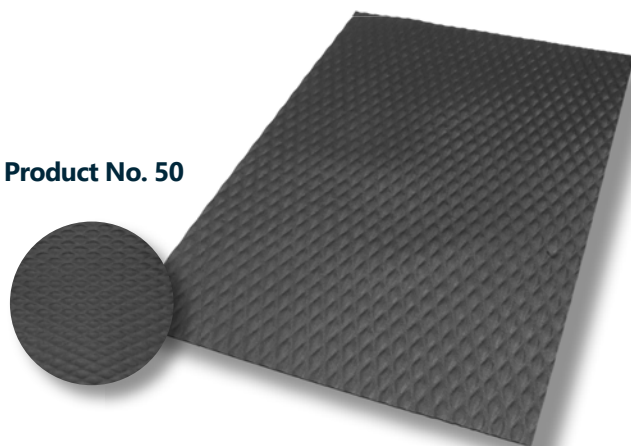
## SIZES

2' x 3'  
3' x 5'  
3' x 9'  
3' x 12'  
4' x 6'  
4' x 9'  
4' x 12'

Please note, mat sizes are approximate as rubber shrinks and expands in conjunction with temperature and time. Tolerable manufacturing size variance is 3-5%.



Product No. 50



# TRACTION TREAD GRIT

Slip-Resistant · Indoor · Wet Area



- **Clean** – Drainage holes allow liquid to flow through; lifetime anti-microbial treatment prevents odors and degradation of the mat
- **Slip-Resistant & Safe** – Certified high-traction by the National Floor Safety Institute (NFSI)
- **Durable** – 7/32" thick nitrile rubber united with 4.5" x 11" silicon carbide grit inserts provide unmatched protection to falls in slip-prone areas
- **Versatile** – Grease, oil and chemical resistant
- **Easy to Clean** – Lightweight flexible design ensures easy handling and cleaning

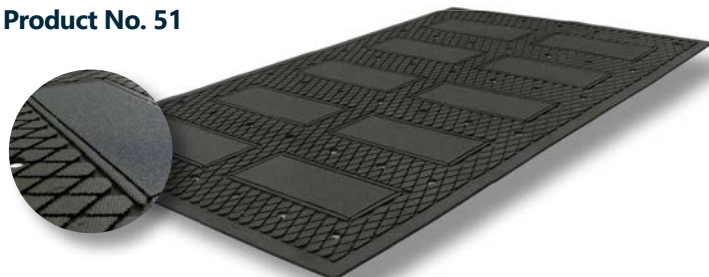
## SIZES

**3' x 5'**

Please note, mat sizes are approximate as rubber shrinks and expands in conjunction with temperature and time. Tolerable manufacturing size variance is 3-5%.



Product No. 51





# SWITCHBOARD

Non-Conductive · Indoor



## CORRUGATED

Product No. 781

- Type II, Class 2 (meets additional testing for flame, oil, and ozone resistance)
- Conforms to ASTM D-178-01 testing
- Tested dielectric strength is 30,000 volts
- Maximum use voltage is 17,000 volts
- 1/4"

## DIAMOND PLATE

Product No. 783

### SIZES

#### Corrugated

24" x 75'

36" x 75'

48" x 75'

#### Diamond

36" x 75'

## MILITARY DIAMOND

Product No. 782

- Meets strict military specification standard MIL-DTL15562G
- Type III - PVC runner
- Dielectric strength: the floor covering shall not fail at less than 30,000 volts when tested as specified - MIL-DTL15562G
- 3/16" diamond, 1/8" smooth

## MILITARY SMOOTH

Product No. 784

### SIZES

36" x 75'

# WATERHOG® FORKLIFT

Specialty · Outdoor



Charcoal



Dark Brown



Medium Brown



Medium Grey



Navy



Red/Black

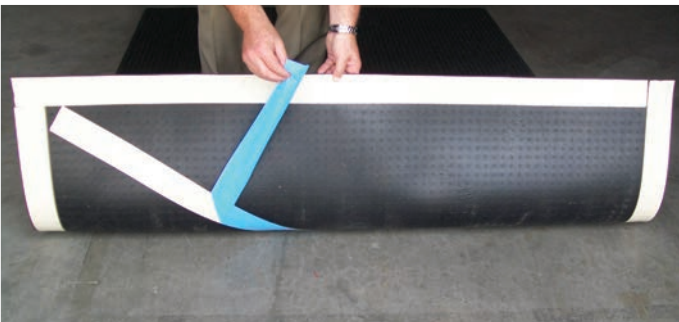


- **Durable** – Reinforced rubber nubs, backing, and fabric top are designed to withstand forklift traffic up to 14,000 pounds
- **Clean and Dry** – Bi-level surface removes dirt and moisture from wheels and trap it to minimize tracking
- **Easy to Install** – Mats are easy to install and scalable for large applications; aggressive adhesive taping system (sold separately) keeps tiles from moving
- **Eco-Friendly** – Rubber backing contains 20% post-consumer recycled rubber from car tires; PET surface is made from at least 90% recycled content reclaimed from plastic
- Available in 6 colors with 100 mil smooth SBR backing
- WaterHog Forklift mats should be installed with double-sided tape (not included)

## SIZES

4' x 6' Tiles  
3" x 108' Tape

### Product No. 1049 (Double Sided Tape )



**DOUBLE SIDED TAPE** installation system eliminates mat movement.

### Product No. 1253





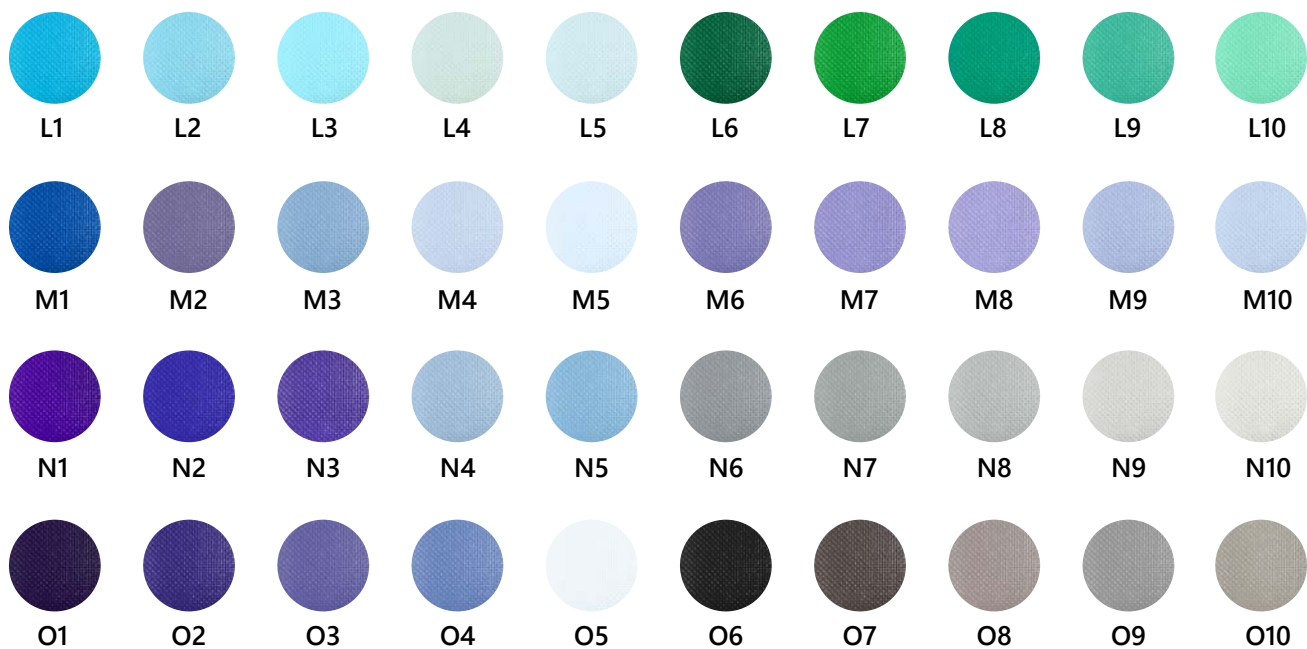
## **COLOR GUIDE**

Colors may vary due to inconsistencies of various display monitors.

Screen images are intended to be used as a guide only.







### Berber Impressions HD



## Berber Roll Goods • Berber Roll Goods Inlay



*\*These colors are available for widths over 6' only.*

## ColorStar®



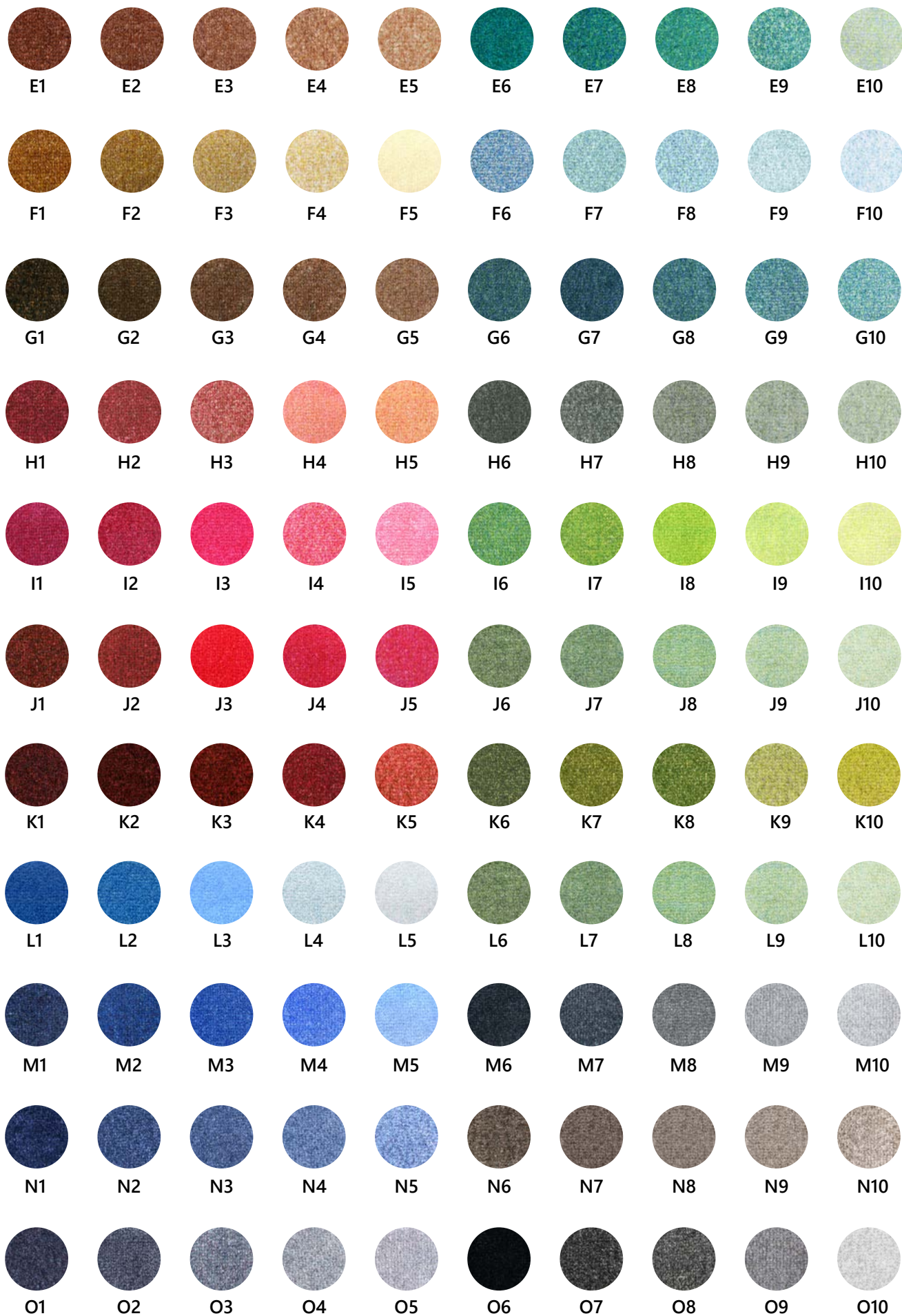


## ColorStar® Impressions



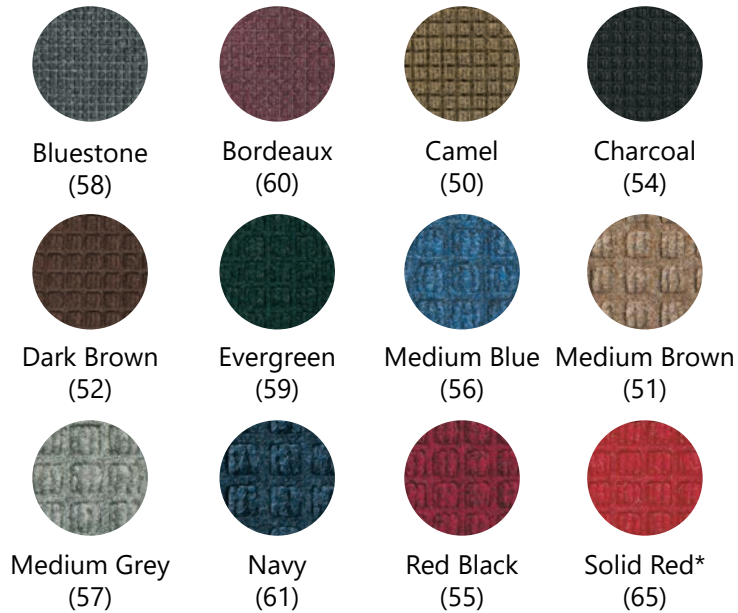
## ColorStar® Impressions HD • ColorStar® Impressions HD Custom Shape







WaterHog® • WaterHog® Drainable Border • WaterHog® Diamond  
WaterHog® Inlay • WaterHog® CleanShield Stride



\*Solid Red is the available in 3' and 4' widths only.

WaterHog® Max Roll Goods Inlay

Background Colors



Logo Colors



WaterHog® Max Diamond • WaterHog® Max Herringbone • WaterHog® Max Grand •  
WaterHog® Plus • WaterHog® Max Tile • WaterHog® Max Roll Goods



Black  
Smoke



Chestnut  
Brown



Grey Ash



Indigo



Khaki



Maroon



Southern  
Pine

WaterHog Impressions HD®



A1



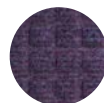
A2



A3



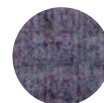
A4



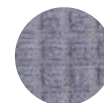
A5



A6



A7



A8



B1



B2



B3



B4



B5



B6



B7



B8



C1



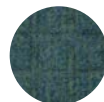
C2



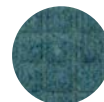
C3



C4



C5



C6



C7



C8



D1



D2



D3



D4



D5



D6



D7



D8



E1



E2



E3



E4



E5



E6



E7



E8



F1



F2



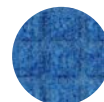
F3



F4



F5



F6



F7



F8



G1



G2



G3



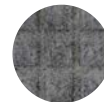
G4



G5



G6



G7



G8